

MASS ELASTIC DATA
 STIFFNESS K = 0.066 DEG/100 LBFT
 INERTIA $W_r^2 = 0.15 \text{ LB}\cdot\text{FT}^2$

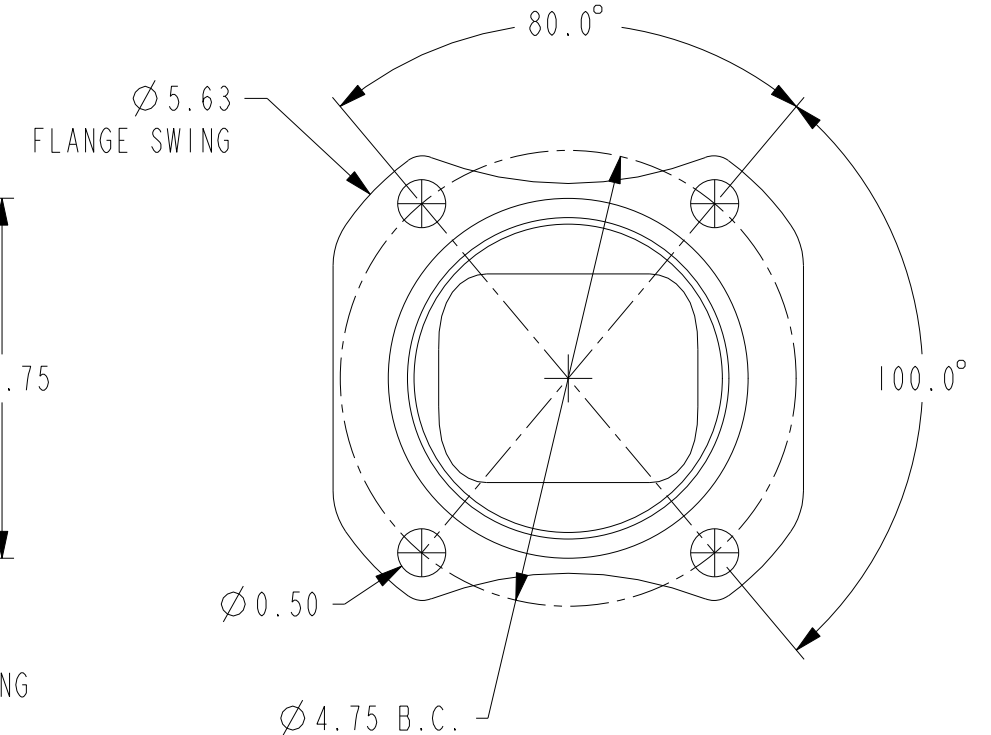
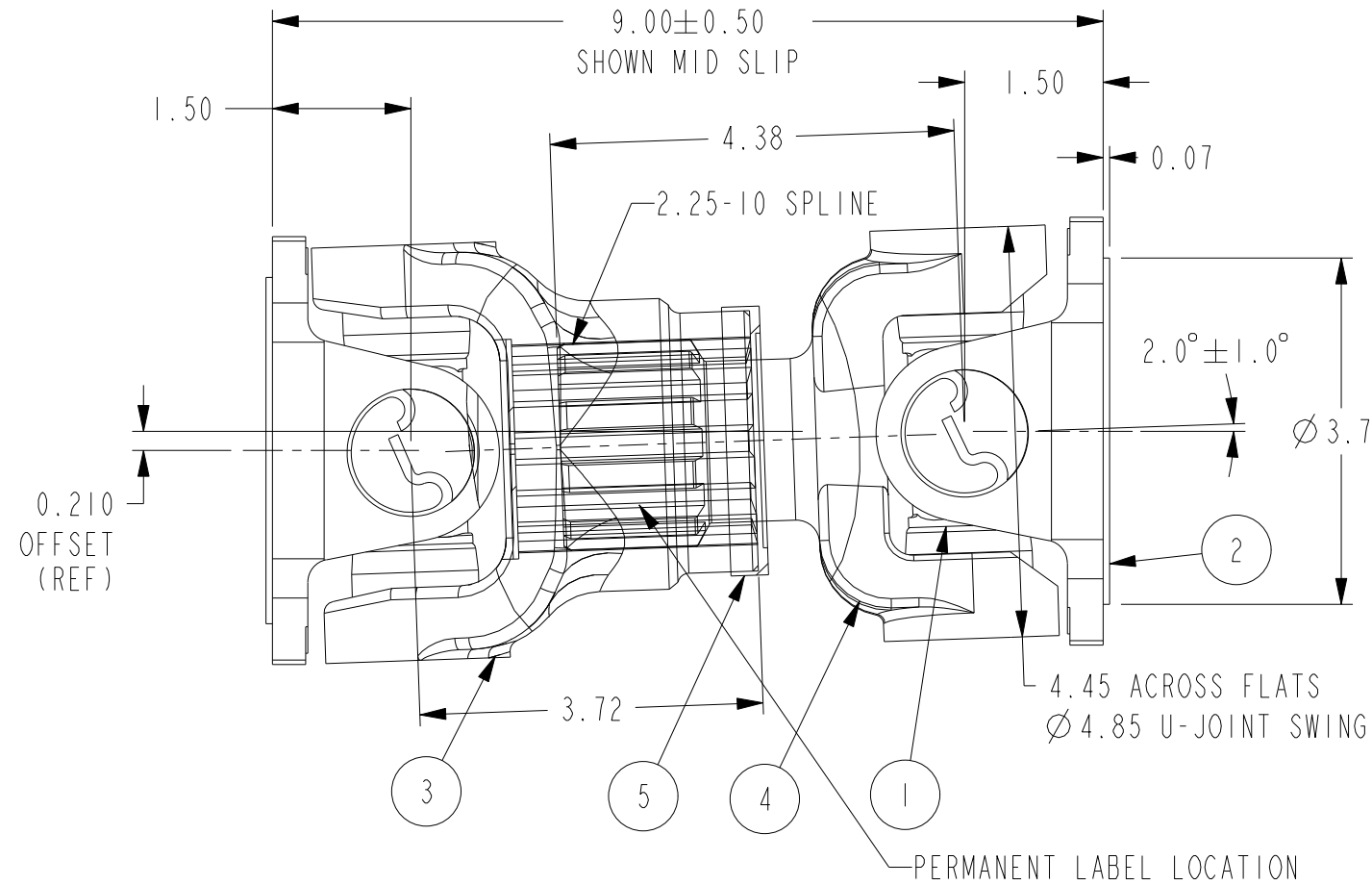
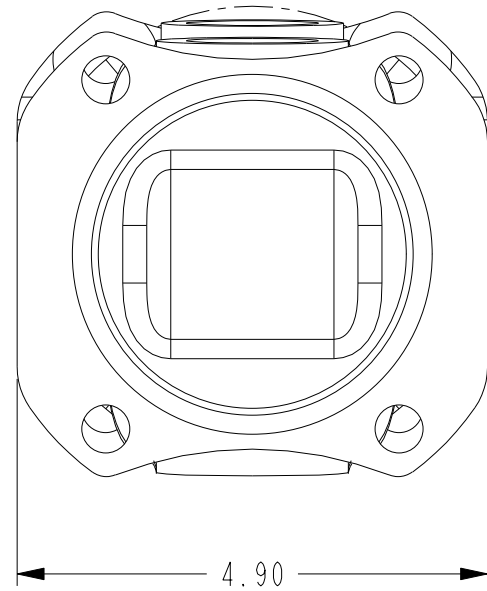
WEIGHT = 19.5 LB

UL LISTED VENDOR P/N 202290-1
 ASSEMBLED AND BALANCED
 P/N: 311925-001 (NO SERVICEABLE PARTS)

BOLT KIT:
 P/N 300-1005 (THRU HOLE)
 P/N 300-1006 (TAPPED HOLE)

UL LISTED RPM	UL LISTED TORQUE
1470	499
1760	473
2100	448
2350	434
2600	420

ITEM	P/N	DESCRIPTION	QTY
1	5-188X	U-JOINT	2
2	3-2-489	FLANGE YOKE	2
3	3-3-162IKX	SLIP YOKE	1
4	3-82-271	STUB YOKE	1
5	D3D	DUST CAP	1



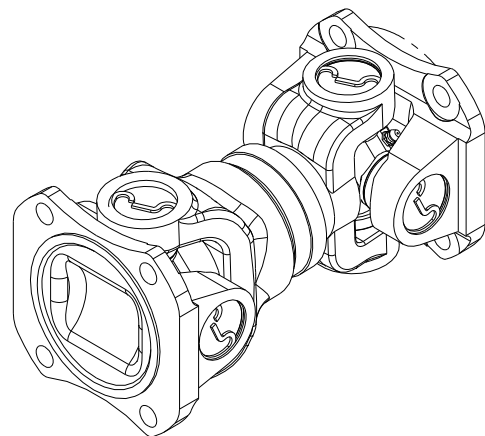
XXXX = VALUES PER CHART
 (4) PLACES

TORQUE AT MIN SPEED	
XXXX FT/LB AT	XXXX RPM
TORQUE AT MAX SPEED	
XXXX FT/LB AT	XXXX RPM

40WU
FLEXIBLE CONNECTING SHAFT

CFP#14346 LABEL PROVIDED WITH:
 MFG-P/N-DATE CODE, CHART
 VALUES, AND SERIAL NUMBER
 (APPLIED BY SHAFT VENDOR)

MFG-P/N-DATE CODE
 SCALE 2.000



SCALE 0.250

This document contains confidential and trade secret information, is the property of Cummins Fire Power LLC and is given to the receiver in confidence. The receiver, by receiving and retaining of the document accepts the document in confidence and agrees that, except as authorized in writing by Cummins Fire Power, it will (1) not use the document or any copy thereof or the confidential or trade secret information therein, (2) not copy the document, (3) not disclose to others either the document or the confidential or trade secret information therein, and (4) upon completion of the need to retain the document, or upon demand, return the document, all copies thereof, and all material copied therefrom. COPYRIGHT Cummins Fire Power LLC

	CUMMINS FIRE POWER LLC CORPORATE OFFICE 1600 BUERKLE ROAD WHITE BEAR LAKE, MN WWW.CUMMINSFIREPOWER.COM	CUSTOM DESIGN AND UPFIT CENTER 875 LAWRENCE DRIVE DEPERE, WISCONSIN
	DRIVESHAFT, 1480 SHORT COUPLED UL LISTED	

UNLESS OTHERWISE SPECIFIED ALL DIMENSION TOLERANCES ARE

ANGULAR DIMENSIONS ± 1° IMPERIAL UNITS METRIC UNITS

THIRD ANGLE PROJECTION 	MACHINE TOLERANCES XX ± 0.010 XX ± 0.005	MACHINE TOLERANCES XX ± 0.2 XX ± 0.1
	FORM TOLERANCES XX ± 0.020 XX ± 0.015	FORM TOLERANCES XX ± 0.8 XX ± 0.4
	FAB TOLERANCES XX ± 0.080 XX ± 0.030	FAB TOLERANCES XX ± 1.5 XX ± 0.8

DWG UNITS:	DRAWN BY: GVD	DATE: 19AUG2008
	PRO-ENGINEER	REF DRWG:
SCALE: 0.500	SHEET 1 OF 1	DRAWING NO: 13418
EST WEIGHT: 19.500		

REV	ENF	DESCRIPTION OF REVISION	REV BY	DATE
B	2009-090	ADDED DIMS. REV CHART	DAVE N	25MAR2009
A	2009-006	REV PER TITLE BLOCK. ADDED P/N	DAVE N	03FEB2009