

MASS ELASTIC DATA
 STIFFNESS K = 0.070 DEG/100 LBFT
 INERTIA $W_r^2 = 0.47 \text{ LB}\times\text{FT}^2$

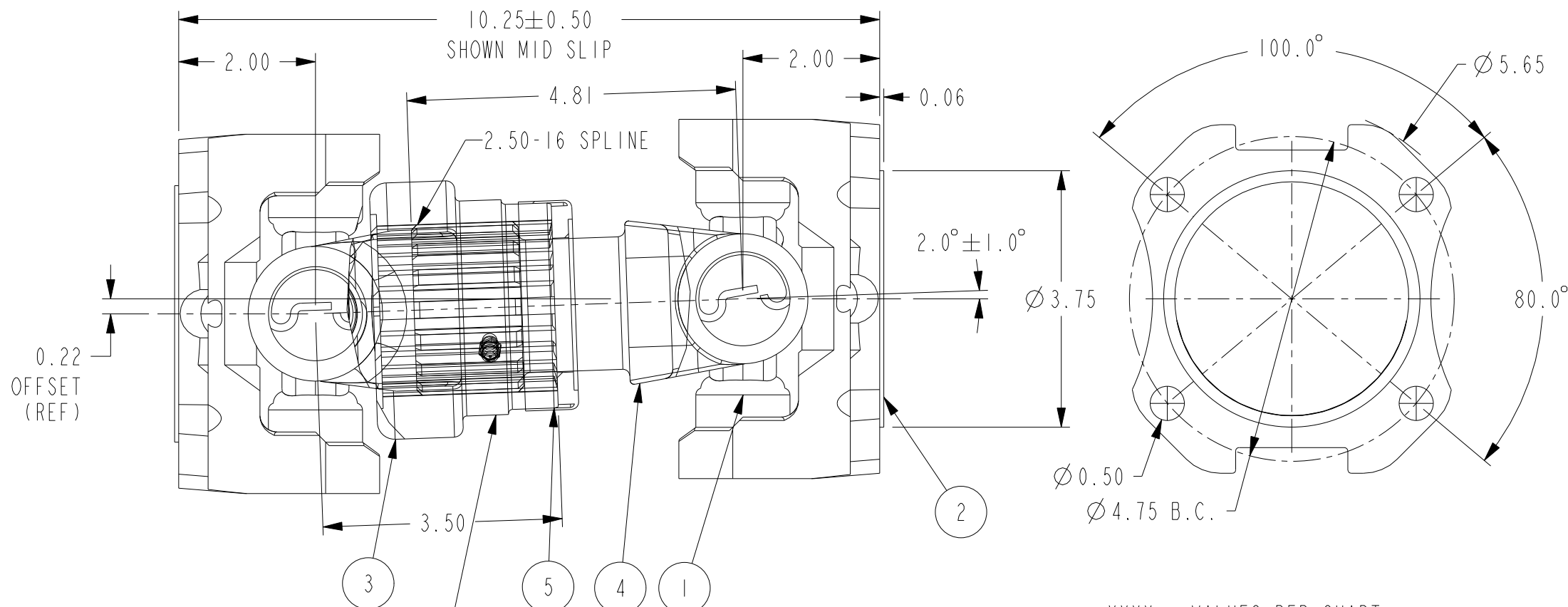
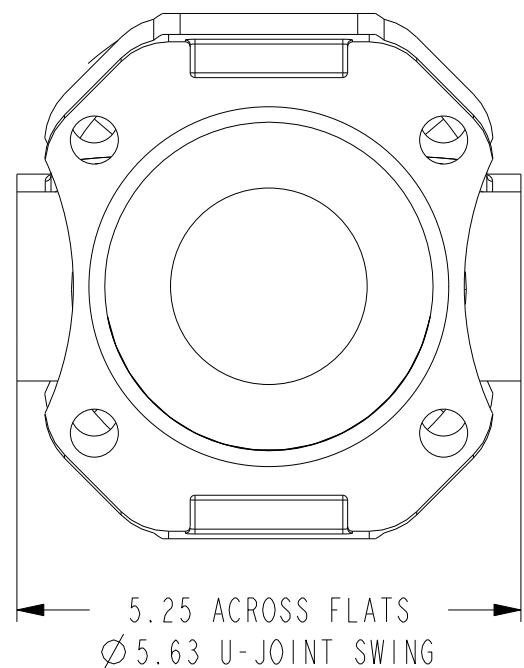
WEIGHT = 29.5 LB

UL LISTED VENDOR P/N 204249-6
 ASSEMBLED AND BALANCED
 P/N: 311926-001 (NO SERVICEABLE PARTS)

BOLT KIT:
 P/N 300-1005 (THRU HOLE)
 P/N 300-1006 (TAPPED HOLE)

| UL LISTED RPM | UL LISTED TORQUE |
|---------------|------------------|
| 1470 | 625 |
| 1760 | 592 |
| 2100 | 562 |
| 2350 | 543 |
| 2600 | 526 |
| 2800 | 515 |
| 3000 | 505 |

| ITEM | P/N | DESCRIPTION | QTY |
|------|------------|-------------|-----|
| 1 | 5-155X | U-JOINT | 2 |
| 2 | 4-2-669 | FLANGE YOKE | 2 |
| 3 | 4-3-1261KX | SLIP YOKE | 1 |
| 4 | 4-82-201 | STUB YOKE | 1 |
| 5 | DL4 | DUST CAP | 1 |



PERMANENT LABEL LOCATION

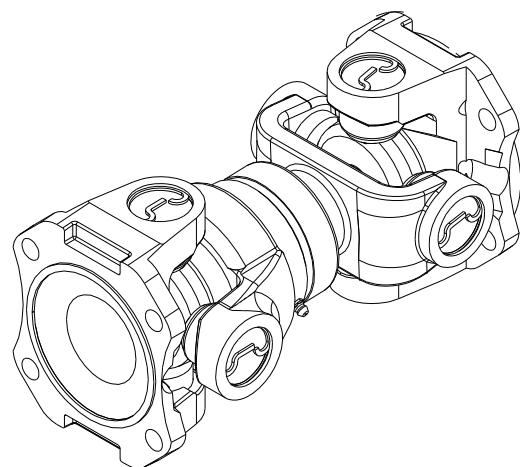
CFP#14346 LABEL PROVIDED WITH:
 MFG-P/N-DATE CODE, CHART
 VALUES, AND SERIAL NUMBER
 (APPLIED BY SHAFT VENDOR)

XXXX = VALUES PER CHART
 (4) PLACES

| | | |
|--------------------------|------------------------|-----------------------------------|
| Cummins Fire Power | TORQUE AT MIN SPEED | UL LISTED |
| | XXXX FT/LB AT XXXX RPM | |
| P/N | TORQUE AT MAX SPEED | 40WU FLEXIBLE CONNECTING SHAFT |
| | XXXX FT/LB AT XXXX RPM | |

MFG-P/N-DATE CODE

SCALE 2.000



SCALE 0.250

This document contains confidential and trade secret information, is the property of Cummins Fire Power LLC and is given to the receiver in confidence. The receiver, by receiving and retaining of the document accepts the document in confidence and agrees that, except as authorized in writing by Cummins NPower, it will (1) not use the document or any copy thereof or the confidential or trade secret information therein, (2) not copy the document, (3) not disclose to others either the document or the confidential or trade secret information therein, and (4) upon completion of the need to retain the document, or upon demand, return the document, all copies thereof, and all material copied therefrom. COPYRIGHT Cummins Fire Power LLC

| | | |
|--|--|--|
| | CUMMINS FIRE POWER LLC CORPORATE OFFICE 1600 BUERKLE ROAD WHITE BEAR LAKE, MN WWW.CUMMINSFIREPOWER.COM | CUSTOM DESIGN AND UPFIT CENTER 875 LAWRENCE DRIVE DEPERE, WISCONSIN |
| | DRIVESHAFT, 1550, SHORT COUPLED UL LISTED FOR FIREPUMP SERVICE | |

UNLESS OTHERWISE SPECIFIED ALL DIMENSION TOLERANCES ARE

| ANGULAR DIMENSIONS ± 1° | IMPERIAL UNITS | METRIC UNITS |
|-------------------------|--|--|
| THIRD ANGLE PROJECTION | MACHINE TOLERANCES .XX ± 0.010 .XX ± 0.005 | MACHINE TOLERANCES .XX ± 0.2 .XX ± 0.1 |
| | FORM TOLERANCES .XX ± 0.010 .XX ± 0.015 | FORM TOLERANCES .XX ± 0.8 .XX ± 0.4 |
| | FAB TOLERANCES .XX ± 0.080 .XX ± 0.030 | FAB TOLERANCES .XX ± 1.5 .XX ± 0.8 |

| | | |
|--------------------|---------------------|-------------------|
| DWG UNITS: | DRAWN BY: GVD | DATE: 19AUG2008 |
| SCALE: 0.500 | PRO-ENGINEER | REF DRWG: |
| EST WEIGHT: 29.500 | SHEET 1 OF 1 | DRAWING NO: 13419 |

| REV | ENF | DESCRIPTION OF REVISION | REV BY | DATE |
|-----|----------|--------------------------------|--------|-----------|
| B | 2009-090 | ADDED DIMS. REV CHART | DAVE N | 25MAR2009 |
| A | 2009-006 | REV PER TITLE BLOCK. ADDED P/N | DAVE N | 03FEB2009 |