

MASS ELASTIC DATA
 STIFFNESS K = 0.028 DEG/100 LBFT
 INERTIA $W_r^2 = 1.642 \text{ LBxFT}^2$

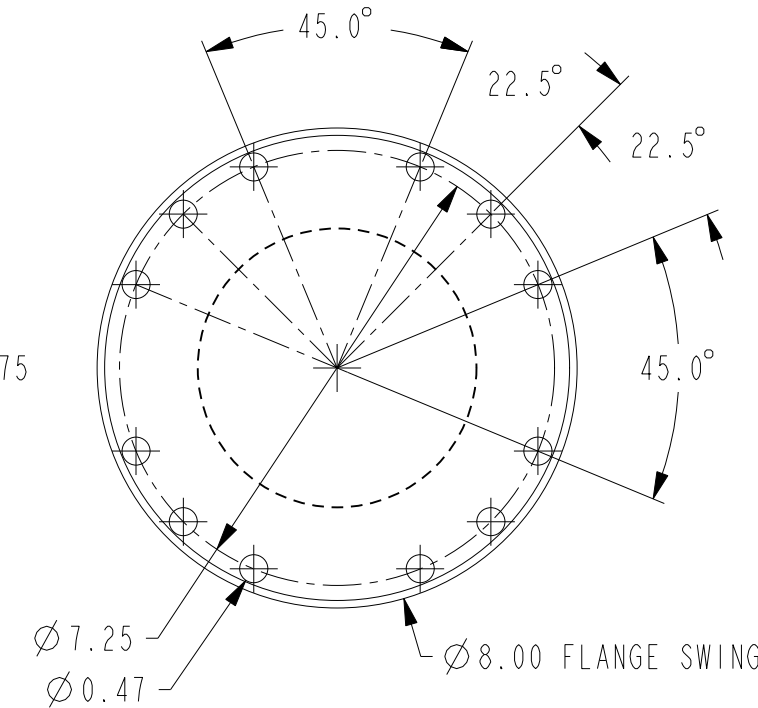
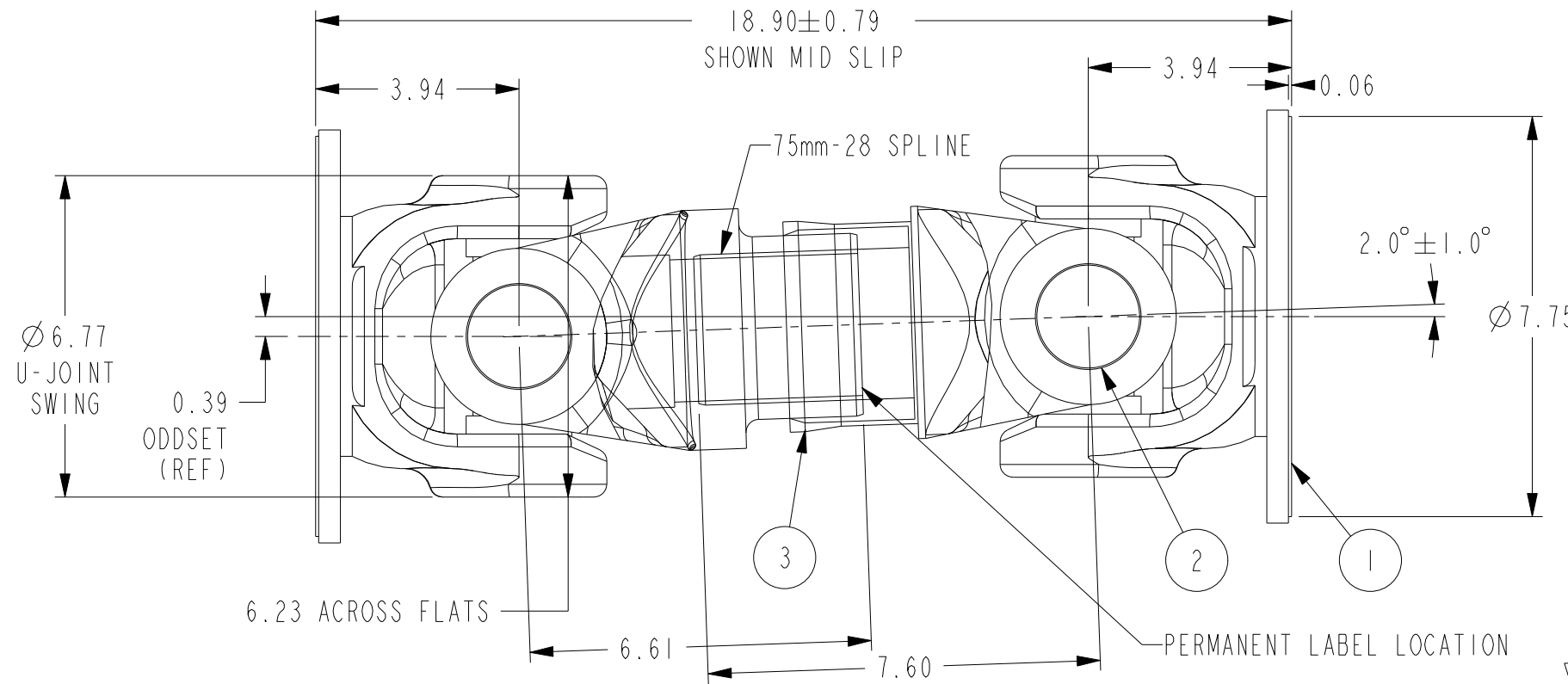
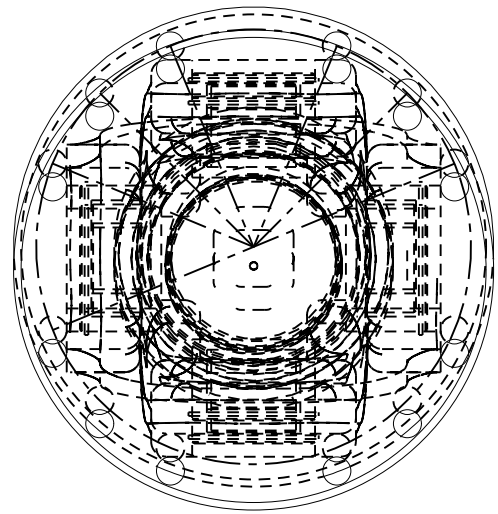
WEIGHT = 74.0 LB

UL LISTED VENDOR P/N 12-0035811 
 ASSEMBLED AND BALANCED
 P/N: 311959-001 (NO SERVICEABLE PARTS)

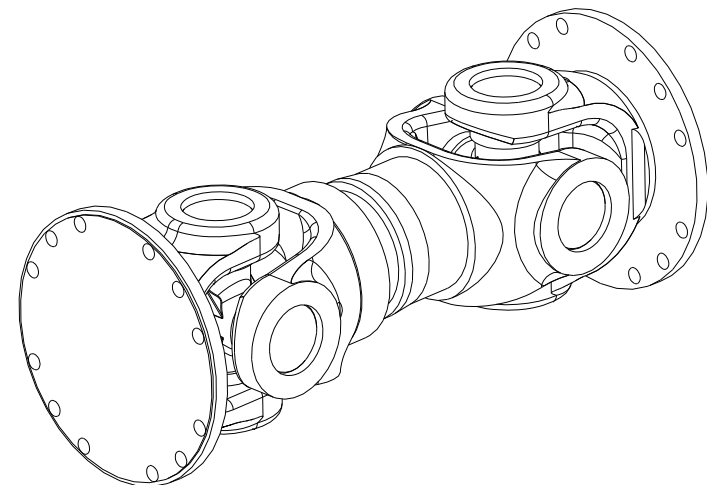
BOLT KIT:
 P/N 300-1009 (THRU HOLE)
 P/N 300-1010 (TAPPED HOLE)

UL LISTED RPM	UL LISTED TORQUE
1470	2200
1800	2163

ITEM	P/N	DESCRIPTION	QTY
1	1109-90196	FLANGE YOKE	2
2	1116-90117	U-JOINT	2
3	1105-90434	CENTER SECTION	1
4			
5			




XXXX = VALUES PER CHART
 (4) PLACES




SCALE 0.188

CFP#14346 LABEL PROVIDED WITH:
 MFG-P/N-DATE CODE, CHART
 VALUES, AND SERIAL NUMBER
 (APPLIED BY SHAFT VENDOR)


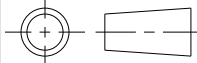


TORQUE AT MIN SPEED	
XXXX FT/LB AT	XXXX RPM
TORQUE AT MAX SPEED	
XXXX FT/LB AT	XXXX RPM



40WU
 FLEXIBLE CONNECTING SHAFT

P/N ● MFG-P/N-DATE CODE
 SCALE 2.000

This document contains confidential and trade secret information, is the property of Cummins Fire Power LLC and is given to the receiver in confidence. The receiver, by receiving and retaining of the document accepts the document in confidence and agrees that, except as authorized in writing by Cummins Fire Power, it will (1) not use the document or any copy thereof or the confidential or trade secret information therein, (2) not copy the document, (3) not disclose to others either the document or the confidential or trade secret information therein, and (4) upon completion of the need to retain the document, or upon demand, return the document, all copies thereof, and all material copied therefrom. COPYRIGHT Cummins Fire Power LLC					CUMMINS FIRE POWER LLC CORPORATE OFFICE 1600 BUERKLE ROAD WHITE BEAR LAKE, MN WWW.CUMMINSFIREPOWER.COM		CUSTOM DESIGN AND UPFIT CENTER 875 LAWRENCE DRIVE DEPERE, WISCONSIN		
UNLESS OTHERWISE SPECIFIED ALL DIMENSION TOLERANCES ARE									
ANGULAR DIMENSIONS ± 1°		IMPERIAL UNITS			METRIC UNITS				
THIRD ANGLE PROJECTION		MACHINE TOLERANCES .XX ± 0.010 .XX ± 0.005			MACHINE TOLERANCES .XX ± 0.2 .XX ± 0.1				
		FORM TOLERANCES .XX ± 0.010 .XX ± 0.015			FORM TOLERANCES .XX ± 0.8 .XX ± 0.4				
		FAB TOLERANCES .XX ± 0.000 .XX ± 0.030			FAB TOLERANCES .XX ± 0.5 .XX ± 0.8				
DWG UNITS:				DRAWN BY: GVD			DATE: 19AUG2008		
SCALE: 0.313				PRO-ENGINEER			REF DRWG:		
EST WEIGHT: 74.000				SHEET 1 OF 1			DRAWING NO: 13430		

REV	ENF	DESCRIPTION OF REVISION	REV BY	DATE
B	2009-090	REV P/N. ADDED DIMS. RFEV CHART	DAVE N	25MAR2009
A	2009-006	REV PER TITLE BLOCK. ADDED P/N	DAVE N	03FEB2009