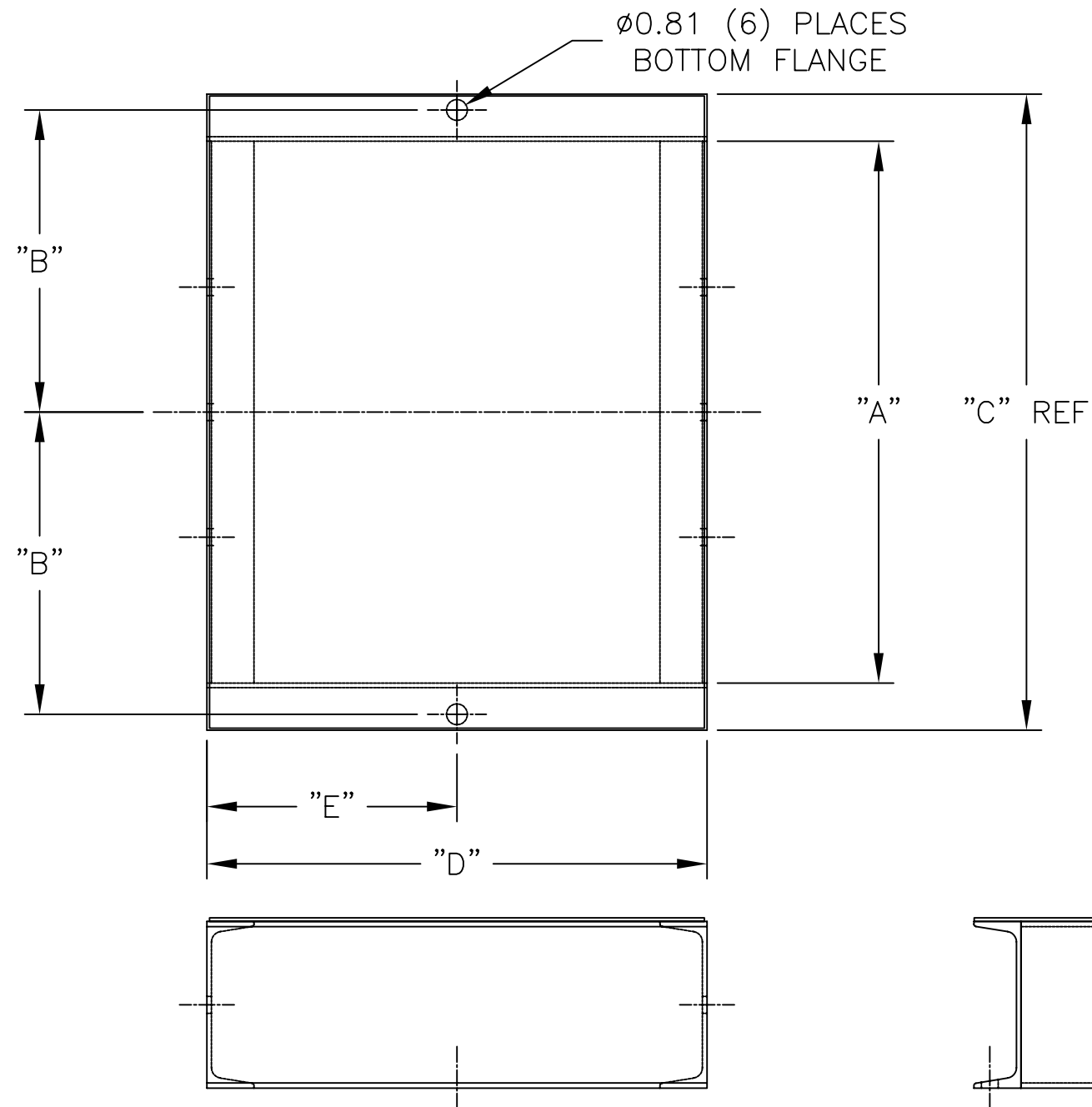
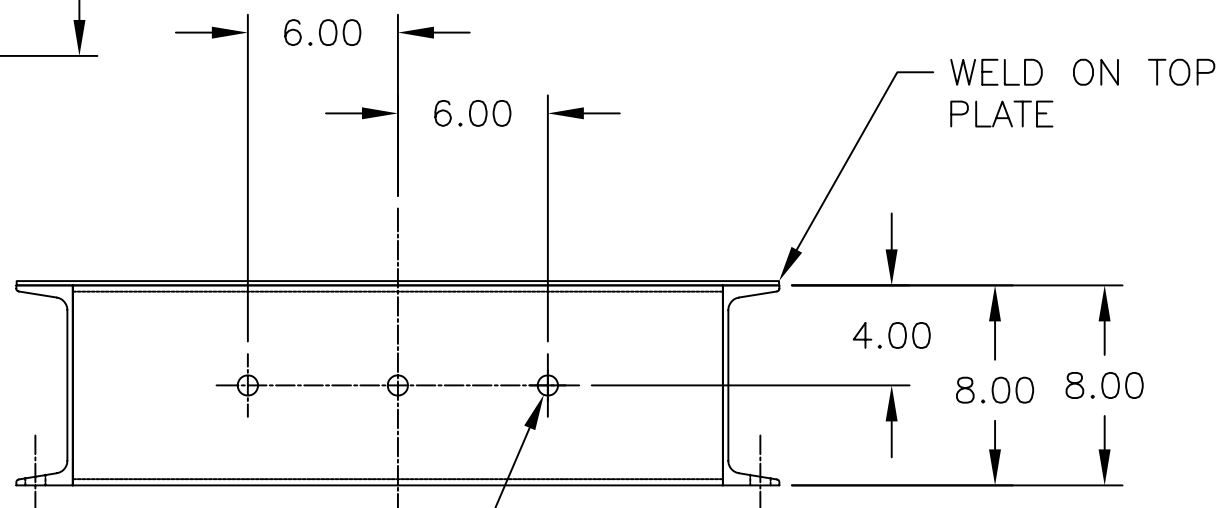


ITEM	QTY	DESCRIPTION	WEIGHT #	DIMENSION A	DIMENSION B	DIMENSION C	DIMENSION D	DIMENSION E	TOP PLATE
-01	AR	24" LG 20" ID	74	20.00	11.50	24.52	24	12	23.75x24.25
-02	AR	24" LG 26" ID	88	26.00	14.50	30.52	24	12	23.75x30.25




NOTES

- 1) MATERIAL: CHANNEL, STRUCTURAL, C8 11.5# AND SHEET, 10 GA HRS
- 2) REMOVE BURRS AND SHARP EDGES
- 3) ALL HOLES THRU UNLESS NOTED
- 4) ALL BENDS AT MINIMUM BEND RADIUS
- 5) PRIME AND PAINT FIRE ENGINE RED



∅0.81 (6) PLACES

<small>ALL RIGHTS TO MANUFACTURE, COPY OR DISPOSE OF THIS DRAWING OR ITS CONTENTS ARE RESERVED, UNLESS OTHERWISE SPECIFIED IN WRITING BY CUMMINS NPOWER, LLC</small>			<small>CUMMINS NPOWER CORPORATE OFFICE 1600 BUERKLE ROAD WHITE BEAR LAKE, MN WWW.NPOWER.CUMMINS.COM</small>	<small>CUMMINS FIRE POWER DESIGN CENTER 875 LAWRENCE DRIVE DEPERE, WISCONSIN WWW.CUMMINSFIREPOWER.COM</small>
	<small>UNLESS OTHERWISE NOTED ALL DIMENSIONS ARE IN INCHES APPLY MACHINE TOLERANCES .X = ± 0.06 .XX = ± 0.010 .XXX = ± 0.001 APPLY WELDED TOLERANCES .X = ± 0.25 .XX = ± 0.12 .XXX = ± 0.06</small>	DWG SCALE: 1/8 PLOT SCALE:	DRAWN BY: DAVE N APPD BY:	DATE: 26FEB2005 DATE:
DESCRIPTION FRAME EXTENSION, CONTROLLER MTG				REFERENCE:
REV A REV PER MATERIAL. DAVE N 21APR2005				DRAWING NUMBER: 9660A
REV	DESCRIPTION OF REVISION	BY	DATE	

A	REV PER MATERIAL.	DAVE N	21APR2005
REV	DESCRIPTION OF REVISION	BY	DATE