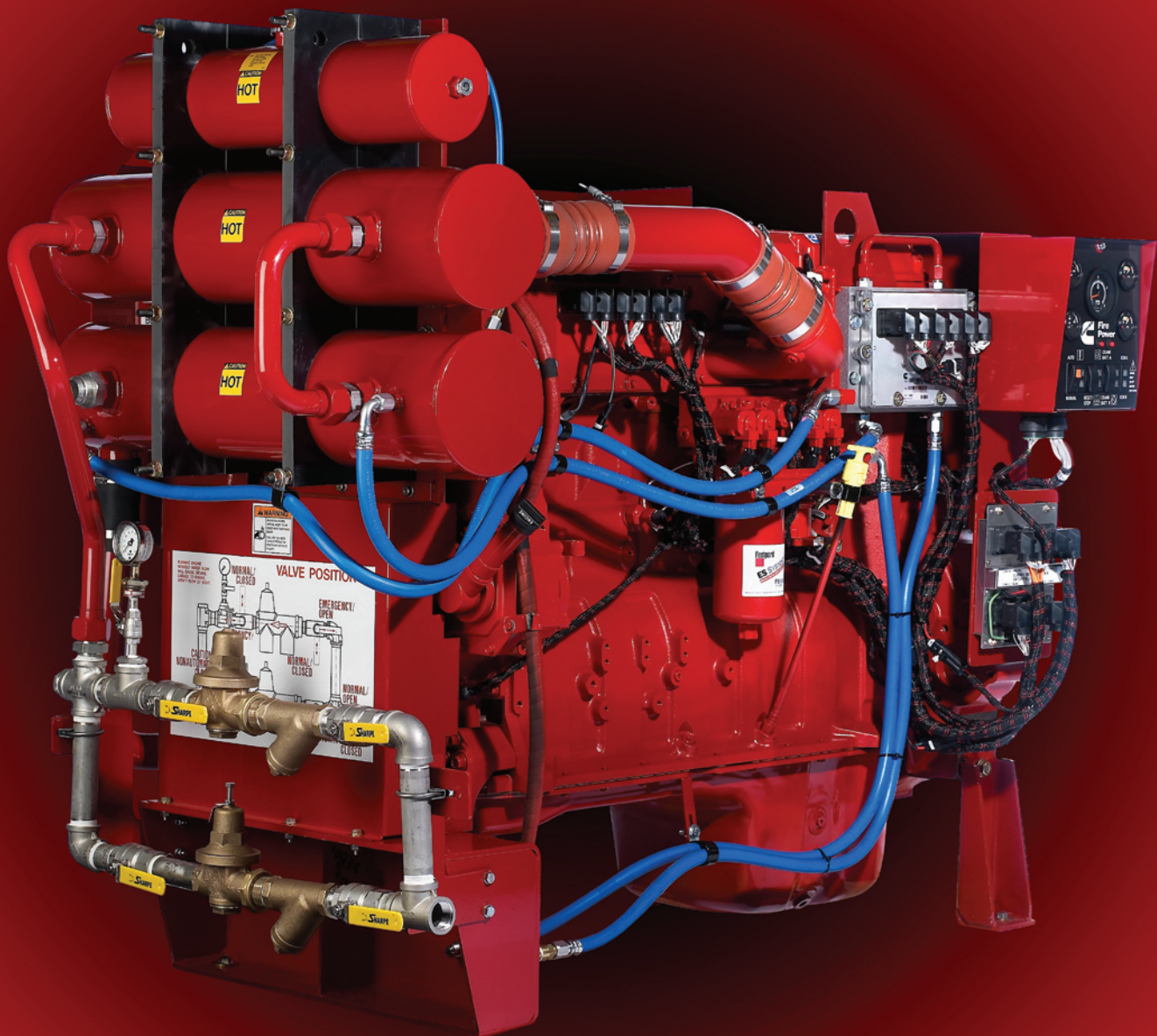
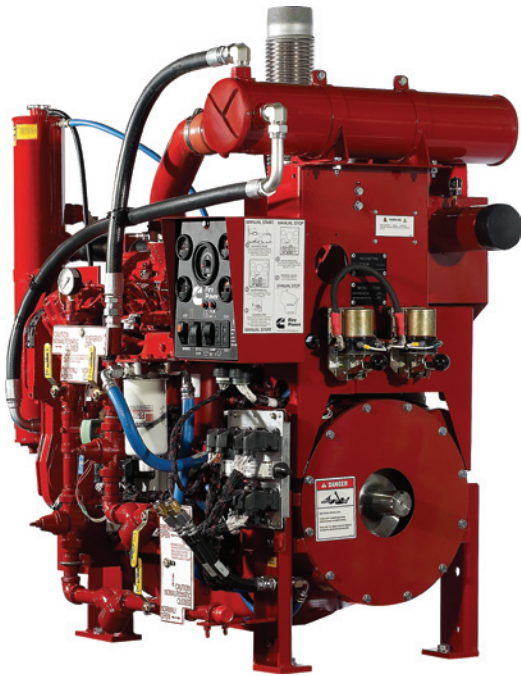


# When Every Second Counts Fire Pump Drivers



## Cummins Fire Power Products



	RPM:	1470	1760	1900	2100	2350	2600	EPA Tier	UL	FM	U.S. / Int'l
Model	HP	HP	HP	HP	HP	HP	HP	Level			Install.
CFP33-F10	31	37	-	37	38	40		T1	Y	Y	U.S. / Int'l
CFP33-F20	50	60	-	57	60	62		T1	Y	Y	U.S. / Int'l
CFP33-F25	-	-	-	-	-	62		T2	Y	Y	U.S. / Int'l
CFP33-F30	62	73	-	72	74	77		T1	Y	Y	U.S. / Int'l
CFP33-F35	-	-	-	-	-	77		T2	Y	Y	U.S. / Int'l
CFP39-F15	-	68	-	88	98	99		T1	Y	Y	U.S. / Int'l
CFP5E-F10	84	98	95	101	105	104		T3	P	P	U.S. / Int'l
CFP5E-F20	94	110	107	113	118	117		T3	P	P	U.S. / Int'l
CFP5E-F30	104	121	118	125	130	129		T3	P	P	U.S. / Int'l
CFP5E-F40	114	113	129	136	143	141		T3	P	P	U.S. / Int'l
CFP5E-F50	124	144	140	148	155	154		T3	P	P	U.S. / Int'l
CFP59-F10	100	115	-	-	-	-		T1	Y	Y	U.S. / Int'l
CFP59-F15	-	-	-	122	126	126		T1	Y	Y	U.S. / Int'l
CFP59-F20	130	149	-	-	-	-		T1	Y	Y	U.S. / Int'l
CFP59-F25	-	-	-	144	148	148		T1	Y	Y	U.S. / Int'l
CFP59-F40	150	171	-	-	-	-		T1	Y	Y	U.S. / Int'l
CFP59-F45	-	-	-	150	158	153		T1	Y	Y	U.S. / Int'l
CFP59-F50	164	188	-	-	-	-		T1	Y	Y	U.S. / Int'l
CFP7E-F10	153	175	162	171	172	174		T3	Y	Y	U.S. / Int'l
CFP7E-F20	166	190	176	185	187	189		T3	Y	Y	U.S. / Int'l
CFP7E-F30	179	205	190	200	201	204		T3	Y	Y	U.S. / Int'l
CFP7E-F40	192	220	204	215	216	219		T3	Y	Y	U.S. / Int'l
CFP7E-F50	205	235	218	229	231	234		T3	Y	Y	U.S. / Int'l
CFP7E-F60	218	250	232	244	245	249		T3	Y	Y	U.S. / Int'l
CFP83-F10	176	202	-	-	-	-		T1	Y	Y	Int'l
CFP83-F20	197	227	-	-	-	-		T1	Y	Y	Int'l
CFP83-F30	216	252	-	-	-	-		T1	Y	Y	Int'l
CFP83-F40	247	288	-	-	-	-		T2	Y	Y	Int'l
	RPM:	1470	1760	1900	2100	2300		EPA Tier	UL	FM	U.S. / Int'l
CFP9E-F10	212	260	275	246	212	-		T3	Y	Y	U.S. / Int'l
CFP9E-F20	230	282	299	268	230	-		T3	Y	Y	U.S. / Int'l
CFP9E-F30	248	305	323	289	248	-		T3	Y	Y	U.S. / Int'l
CFP9E-F40	271	327	347	311	267	-		T3	Y	Y	U.S. / Int'l
CFP9E-F50	289	350	371	332	285	-		T3	Y	Y	U.S. / Int'l
CFP9E-F60	305	359	389	355	304	-		T3	Y	Y	U.S. / Int'l
CFP11E-F10	320	373	-	331	-	-		T2	Y	Y	Int'l
CFP11E-F20	364	424	-	360	-	-		T2	Y	Y	Int'l
	RPM:	1470	1760	1900	2100	2250		EPA Tier	UL	FM	U.S. / Int'l
CFP15E-F10	382	460	488	488	380	-		T3	Y	Y	U.S. / Int'l
CFP15E-F20	411	494	525	525	409	-		T3	Y	Y	U.S. / Int'l
CFP15E-F30	450	542	575	575	448	-		T3	Y	Y	U.S. / Int'l
CFP15E-F40	477	575	610	610	475	-		T3	Y	Y	U.S. / Int'l
CFP15E-F50	-	610	-	-	-	-		T2	Y	Y	Int'l
CFP15E-F60	-	650	-	-	-	-		T2	Y	Y	Int'l
CFP15E-F70	-	686	-	-	-	-		T2	Y	Y	Int'l
CFP15E-F7NL	-	755	-	-	-	-		T2	N	N	U.S. / Int'l
CFP23E-F10	630	697	722	751	617	-		T2	N	N	Int'l
CFP23E-F20	681	753	781	812	666	-		T2	N	N	U.S. / Int'l
CFP23E-F30	724	801	830	864	709	-		T2	N	N	U.S. / Int'l
CFP23E-F40	747	850	-	-	-	-		T2	N	N	U.S. / Int'l
CFP23E-F50	777	925	-	-	-	-		T2	N	N	U.S. / Int'l
CFP23E-F60	817	1000	-	-	-	-		T2	N	N	U.S. / Int'l
CFP23E-F70	852	1075	-	-	-	-		T2	N	N	U.S. / Int'l
CFP30E-F10	935	1064	1077	984	-	-		T2	N	N	U.S. / Int'l
CFP30E-F20	1017	1158	1173	1071	-	-		T2	N	N	U.S. / Int'l
CFP30E-F30	1100	1253	1268	1158	-	-		T2	N	N	U.S. / Int'l
CFP30E-F40	1183	1347	1364	1245	-	-		T2	N	N	U.S. / Int'l



Y = Yes, N = No, P = Pending

## Cummins Fire Power UL Listed Drive Shafts



Model	PN#	Min Speed RPM	Max HP / Torque (lb-ft) @ Min Speed	Max Speed RPM	Max HP / Torque (lb-ft) @ Max Speed	Compatible with Engine Models
1410	13417	1470	106 / 379	1760	120 / 359	CFP33
	13417	1760	120 / 359	2100	136 / 341	
	13417	2100	136 / 341	2350	148 / 330	
	13417	2350	148 / 330	2600	158 / 320	
1480	13418	1470	140 / 499	1760	159 / 473	CFP39 CFP5E
	13418	1760	159 / 473	1900	167 / 462	
	13418	1900	167 / 462	2100	179 / 448	
	13418	2350	194 / 434	2600	208 / 420	
1550	13419	1470	175 / 625	1760	198 / 592	CFP39 CFP5E CFP59
	13419	1760	198 / 592	1900	209 / 579	
	13419	1900	209 / 579	2100	225 / 562	
	13419	2100	225 / 562	2350	243 / 543	
	13419	2350	243 / 543	2600	260 / 526	
	13419	2600	260 / 526	2800	275 / 515	
	13419	2800	275 / 515	3000	288 / 505	
1610	13420	1470	266 / 950	1900	344 / 950	CFP39 CFP5E CFP59 CFP7E CFP83
	13420	1900	344 / 950	2100	378 / 946	
	13420	2100	378 / 946	2350	409 / 915	
	13420	2350	409 / 915	2600	439 / 887	
	13420	2600	439 / 887	2800	463 / 868	
	13420	2800	463 / 868	3000	486 / 850	
1710	13421	1470	336 / 1200	2300	526 / 1200	CFP7E, 83, 9E, 11E
1810	13422	1470	427 / 1525	2100	610 / 1525	CFP83, 9E, 11E, 15E-F10-F40
1880	13423	1470	604 / 2158	1760	686 / 2046	CFP 15E-F10-F70
	13423	1760	686 / 2046	1800	697 / 2034	
3172	13430	1470	616 / 2200	1760	730 / 2177	CFP 15E-F50-F70
	13430	1760	730 / 2177	1800	741 / 2163	

**Note:** Vertical turbine pump applications require torsional analysis to properly size drive shaft.

### Features / Benefits

- Full 2-year warranty on all engine and upfit components
  - Peace of mind
  - Factory-backed support / service
- Low emission engines
  - EPA, Tier-3 compliant
  - Usable worldwide - with either high or low sulfur fuels
- Powder coated steel upfit components
  - Corrosion resistant
  - Durability / longevity
- Heavy duty cooling systems and standard copper heat exchangers
  - Corrosion resistant
  - Durability / longevity
- High swirl intake ports
  - Thorough air / fuel mixing for low fuel consumption
- Wastegated turbochargers
  - Improved engine response across torque curves
- Cast iron skirted block with main bearing supports between each cylinder
  - Added strength and rigidity
  - Durability / longevity
- Forged steel crankshaft with integral counterweights
  - Higher power output from a compact size
- Full authority electronic controls with isochronous governor
  - Precise speed control  $\pm 0\%$
  - Constant speed from churn to 150% flow
- Pedestal leg mounting
  - Easy adaptation / installation to sub bases
  - Customer convenience

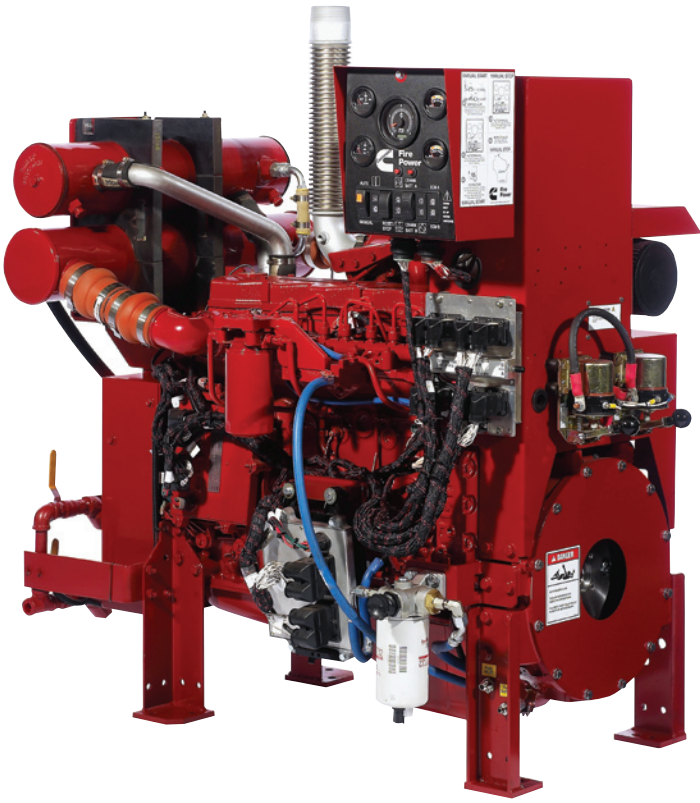
### Standard Equipment:

2 year Cummins warranty  
 Fuel pre-filters  
 Air cleaner, K&N type  
 Electrical, 12V, negative ground \*  
 Heat exchanger cooling system  
 Coolant heater, 110V or 220V  
 NFPA-20 instrument panel, mounted  
 Overspeed switch  
 Dual-starter contactors, NFPA-20  
 Belt guard, water pump, and alternator  
 Exhaust heat shield  
 Red paint finish  
 SAE flywheel

### Optional Equipment:

Air cleaner, HD industrial  
 Electrical, 24V, negative ground \*  
 Batteries, cables, battery racks  
 UL listed drive shafts with guard  
 Stub shaft options with flywheel cover  
 Cooling loops for horizontal pumps  
 Cooling loops for vertical pumps  
 Seawater cooling loops  
 Base rail options for horizontal pumps  
 Base rail and optional engine stands for vertical pumps  
 Base rail extension, 24" for controller mount  
 Exhaust flex connector, NPT, ASA, flange or slotted cuff  
 Exhaust silencer  
 Cummins Encompass Extended Coverage (base engine only)

\* The 33 series is only available at 12 volt. The 15E, 23E, and 30E are only available at 24 volt.



## **CUMMINS FIRE POWER.**

An established manufacturer of premium custom diesel fire pump engine packages specializing in the design, development, and distribution of NFPA 20 compliant and UL-FM certified diesel fire pump drivers. Cummins Fire Power is the first choice among leading OEM's, contractors and engineers in the fire protection industry.

## **EVERY INSTALLATION.**

Our certified technicians are trained and equipped with the latest diagnostic tools, guaranteeing that every installed Cummins Fire Power product meets Cummins standards for engine applications. Our industry leading 2-year/2,000 hour warranty includes parts, labor and travel.

## **EVERY LOCATION.**

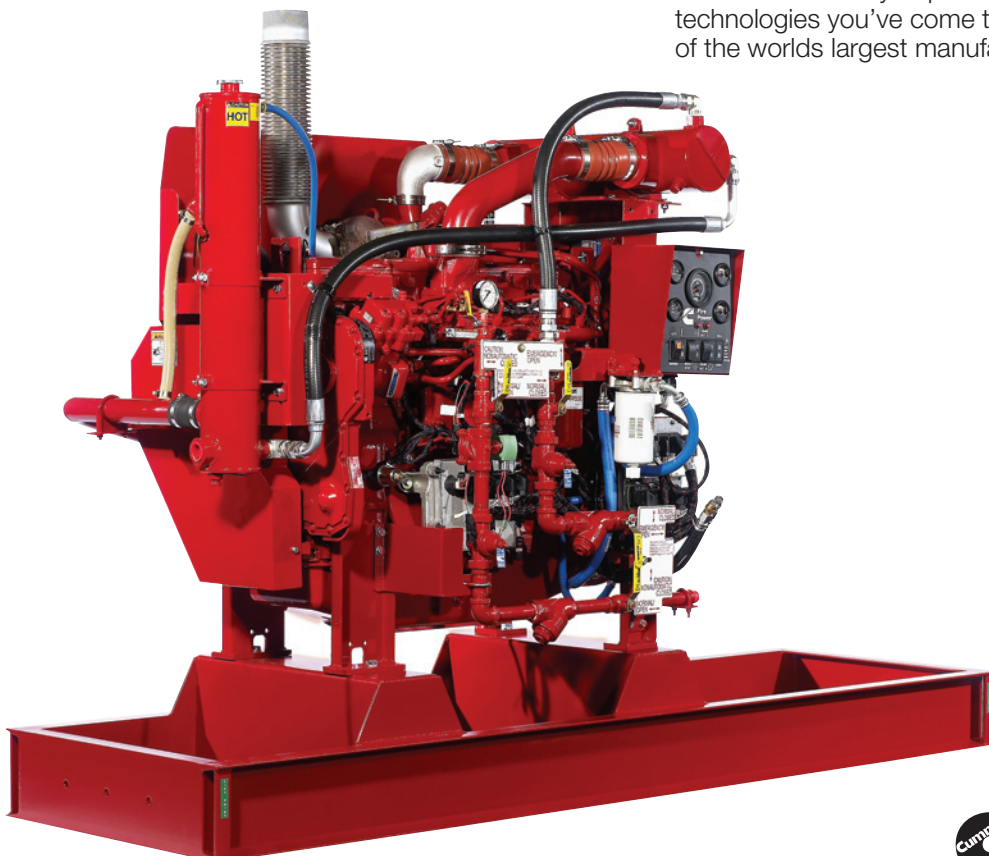
Cummins Inc. and Cummins Fire Power are supported by more than 680 worldwide company owned and independent distributors, and more than 5,000 service dealers worldwide making it possible for you to receive the support you need, 24 hours a day, seven days a week, 365 days a year. Every Cummins technician is trained and certified on the latest engine technologies to ensure that your Cummins Fire Power product performs as specified.

## **EVERY PRODUCT.**

All of our fire pump driver designs incorporate the latest engineering technologies. Every Cummins Fire Power product is powered by a Cummins diesel engine and is rigorously tested to Cummins exacting standards ensuring a premium product, every time.

## **EVERY TIME.**

From the point of order to installation, the Cummins Fire Power product will exceed expectations. Each fire pump driver is backed by dependable engines and the related technologies you've come to expect from Cummins, one of the worlds largest manufacturers of diesel engines.



**Fire  
Power**

**Cummins Fire Power**  
875 Lawrence Drive  
De Pere, WI 54115

Phone: 920 337 9750  
Fax: 920 338 5990  
Internet: [cumminsfirepower.com](http://cumminsfirepower.com)

Bulletin CFP 1001 5/09  
©2009 Cummins Inc.