



Engine Specification Sheet

Cummins Fire Power

De Pere, WI 54115

<http://www.cumminsfirepower.com>

Basic Engine Model

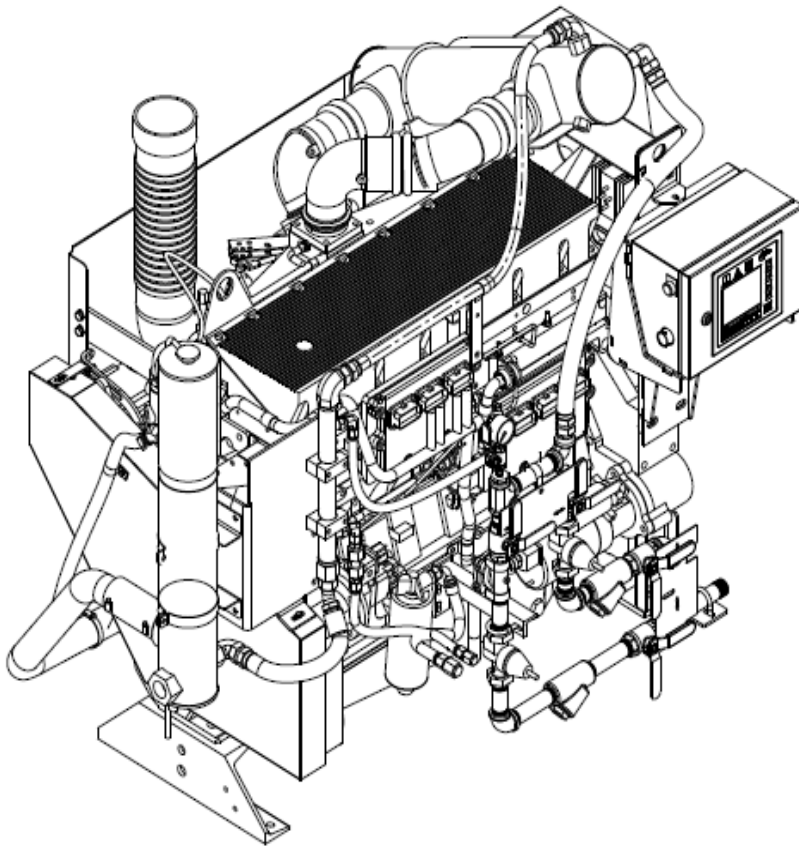
CFP11E-F10, F20

Curve Number:

FR - 20091

Revision Date:

March 2010



Equipment	Standard	Optional
Air Cleaner	Direct Mounted, Disposable, Indoor Service	Disposable, Treated for High Humidity, Indoor Service
Alternator	12V-DC, 100 Amps; With Belt Guard	24V-DC, 70 Amps; With Belt Guard
Cooling Loop	N/A	Maximum Pressure of 400 PSI
Exhaust Protection	Metal Guards on Manifolds and Turbo	N/A
Exhaust Flex Connection	SS Flex, NPT	SS Flex, 150# Flange
Flywheel Power Take-Off	Flywheel	<ul style="list-style-type: none"> • Drive Shaft System • Stub Shaft
Fuel Connections	Fire Resistant Flexible Supply and Return Lines	N/A
Fuel Injection	Direct Injection	N/A
Fuel Filter	Primary Filter with Priming Pump	N/A
Engine Heater	120V-AC, 2250 Watts	240V-AC, 2250 Watts
Governor, Speed	Constant Speed	N/A
Heat Exchanger	Tube & Shell Type, 60 PSI with NPTF Connections	N/A
Instrument Panel	English and Metric, Tachometer, Hourmeter, Water Temperature, Oil Pressure & Two (2) Voltmeters	N/A
Junction Box	Integral with Instrument Panel; For DC Wiring Interconnection to Engine Controller	N/A
Lube Oil Cooler	Engine Water Cooled, Plate Type	N/A
Lube Oil Filter	Full Flow with By-Pass Valve	N/A
Lube Oil Pump	Gear Driven	N/A
Manual Start	On Instrument Panel	N/A
Overspeed Controls	Electronic with Reset & Test on Instrument Panel	N/A
Raw Water Solenoid Operation	Automatic from Engine Controller & from Emergency Local Control	N/A
Run-Stop Control	On Instrument Panel	N/A
Run Solenoid	12V-DC	24V-DC
Starters	12V-DC	24V-DC
Throttle Control	Adjustable Speed Control	N/A
Water Pump	Poly-Vee Belt Drive with Guard	N/A

Operating Speed (RPM)

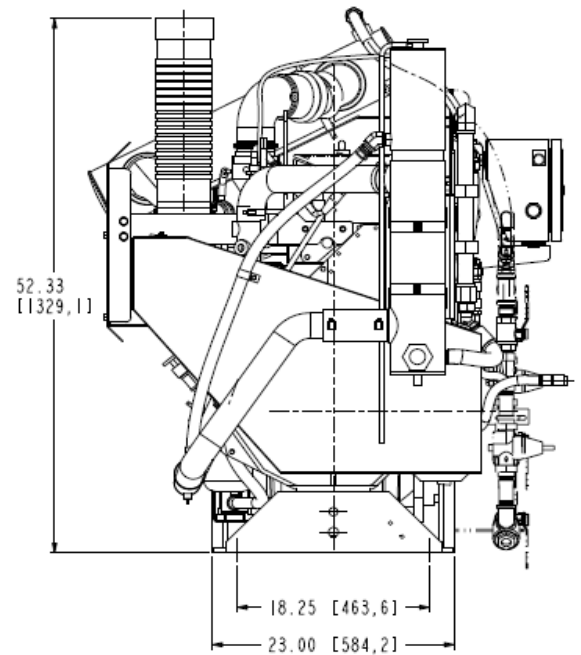
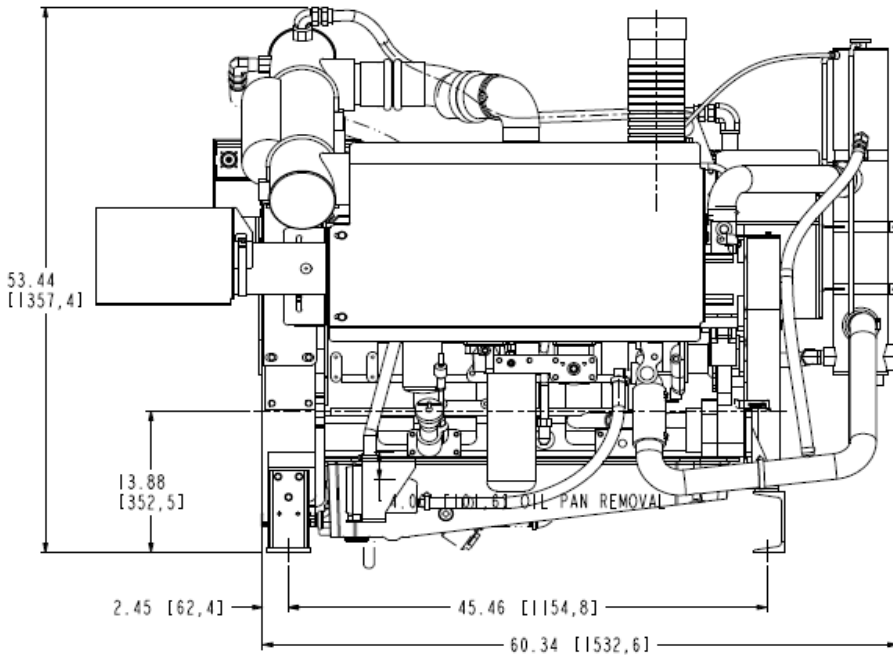
Model	1470	1760	2100
CFP11E-F20	364 (271)	424 (316)	360 (268)
CFP11E-F10	320 (239)	373 (278)	331 (247)

Ratings are: HP (kW)

Specifications

Aspiration.....	Turbocharged and Charge Air Cooled
Rotation.....	Counter clockwise from flywheel end
Weight - lb (kg) Est.....	2700 (1215)
Displacement - in ³ (litre).....	660 (10.8)
Engine Type.....	4 Cycle; In-Line, 6 Cylinder
Engine Series.....	Cummins QSM11 Series
Exhaust Emissions.....	EPA/CARB Tier 2





Engine Ratings Baselines

- Engines are rated at standard SAE conditions of 29.61 in. (7521 mm) Hg barometer and 77 °F (25°C) inlet air temperature (approximates 300ft. (91.4 m) above sea level) by the testing laboratory (see SAE Standard J1349).
- A deduction of 3 percent from engine horsepower rating at standard SAE conditions shall be made for diesel engines for each 1000 ft. (305 m) altitude above 300 ft. (91.4 m).
- A deduction of 1 percent from engine horsepower rating as corrected to standard SAE conditions shall be made for diesel engines for every 10°F above 77°F (24°C) ambient temperature.

Certified Power

This Cummins Fire Power fire pump driver is built to comply with NFPA-20, and is UL listed and FM approved.

For additional information, click the hyperlinks below.

[CFP11E-F10](#)

[CFP11E-F20](#)