



Engine Specification Sheet

Cummins Fire Power

De Pere, WI 54115

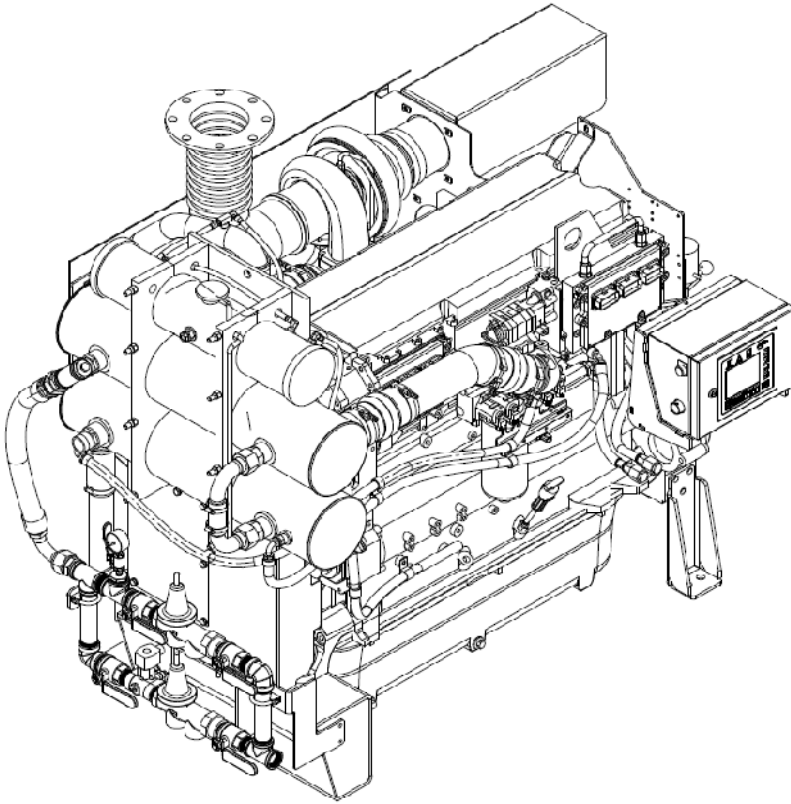
<http://www.cumminsfirepower.com>

CFP Engine Model

CFP15E-F Series

Curve Number: FR - 10549 & 10663

Revision Date: June 2011



Equipment	Standard	Optional
Air Cleaner	Direct Mounted, oil impregnated serviceable element (K&N)	Housed Unit, Flame Resistant Element (FLG AH19266)
Alternator	24V-DC, 70 Amps; With Belt Guard	N/A
Cooling Loop	Optional	For Fresh Water or Salt Water Applications
Exhaust Protection	Metal Guards on Manifolds and Turbo	N/A
Exhaust Flex Connection	SS Flex, NPT	SS Flex, 150# Flange
Flywheel Power Take-Off	Flywheel	• Drive Shaft System • Stub Shaft
Fuel Connections	Fire Resistant Flexible Supply and Return Lines	N/A
Fuel Injection	Direct Injection	N/A
Fuel Filter	Primary Filter with Priming Pump	N/A
Engine Heater	120 / 240 VAC, 3000 Watt	N/A
Governor, Speed	Constant Speed	N/A
Heat Exchanger	Tube & Shell Type, 60 PSI with NPTF Connections	N/A
Instrument Panel	English and Metric, Tachometer, Hourmeter, Water Temperature, Oil Pressure & Two (2) Voltmeters	N/A
Junction Box	Integral with Instrument Panel; For DC Wiring Interconnection to Engine Controller	N/A
Lube Oil Cooler	Engine Water Cooled, Plate Type	N/A
Lube Oil Filter	Full Flow with By-Pass Valve	N/A
Lube Oil Pump	Gear Driven	N/A
Manual Start	On Instrument Panel	N/A
Overspeed Controls	Electronic with Reset & Test on Instrument Panel	N/A
Raw Water Solenoid Operation	Automatic from Engine Controller & from Emergency Local Control	N/A
Run-Stop Control	On Instrument Panel	N/A
Run Solenoid	24V-DC	N/A
Starters	24V-DC	N/A
Throttle Control	Adjustable Speed Control	N/A
Water Pump	Poly-Vee Belt Drive with Guard	N/A

Operating Speed (RPM) Listed Ratings

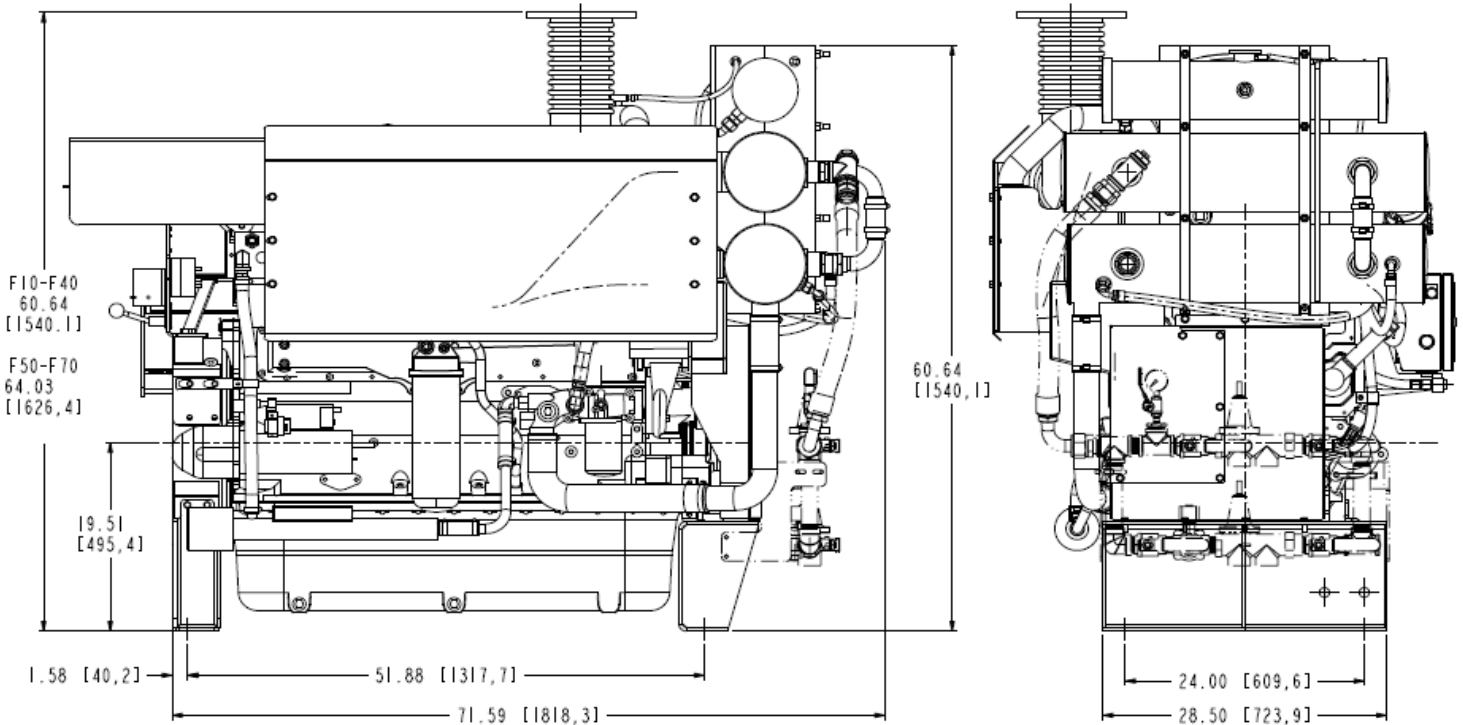
Model	1470	1760	1900	2100	2250
CFP15E-F70		686 (512)			
CFP15E-F60		650 (485)			
CFP15E-F50		610 (455)			
CFP15E-F40	477 (356)	575 (429)	610 (455)	610 (455)	475 (354)
CFP15E-F30	450 (336)	542 (404)	575 (429)	575 (429)	448 (334)
CFP15E-F20	411 (306)	494 (368)	524 (391)	525 (391)	409 (305)
CFP15E-F10	382 (285)	460 (343)	488 (364)	488 (364)	380 (283)

Ratings are: HP (kW)

Specifications

Aspiration.....	Turbocharged and Charge Air Cooled
Rotation.....	Counter clockwise from flywheel end
Weight - lb (kg) Est	4400 (1980)
Displacement - in ³ (liter).....	915 (15.0)
Engine Type.....	4 Cycle; In-Line, 6 Cylinder
Engine Series.....	Cummins QSX15 Series
Exhaust Emissions...CFP15E-F10, F20, F30, F40.....	EPA/CARB Tier 3
Exhaust Emissions...CFP15E-F50, F60, F70.....	EPA/CARB Tier 2





Engine Ratings Baselines

- Engines are rated at standard SAE conditions of 29.61 in. (7521 mm) Hg barometer and 77°F (25°C) inlet air temperature (approximates 300ft. (91.4 m) above sea level) by the testing laboratory (see SAE Standard J1349).
- A deduction of 3 percent from engine horsepower rating at standard SAE conditions shall be made for diesel engines for each 1000 ft. (305 m) altitude above 300 ft. (91.4 m).
- A deduction of 1 percent from engine horsepower rating as corrected to standard SAE conditions shall be made for diesel engines for every 10°F above 77°F (24°C) ambient temperature.

Certified Power

This Cummins Fire Power fire pump driver is built to comply with NFPA-20, and is UL listed and FM approved.

For additional information, click the hyperlinks below.

- [CFP15E-F10](#)
- [CFP15E-F20](#)
- [CFP15E-F30](#)
- [CFP15E-F40](#)
- [CFP15E-F50](#)
- [CFP15E-F60](#)
- [CFP15E-F70](#)