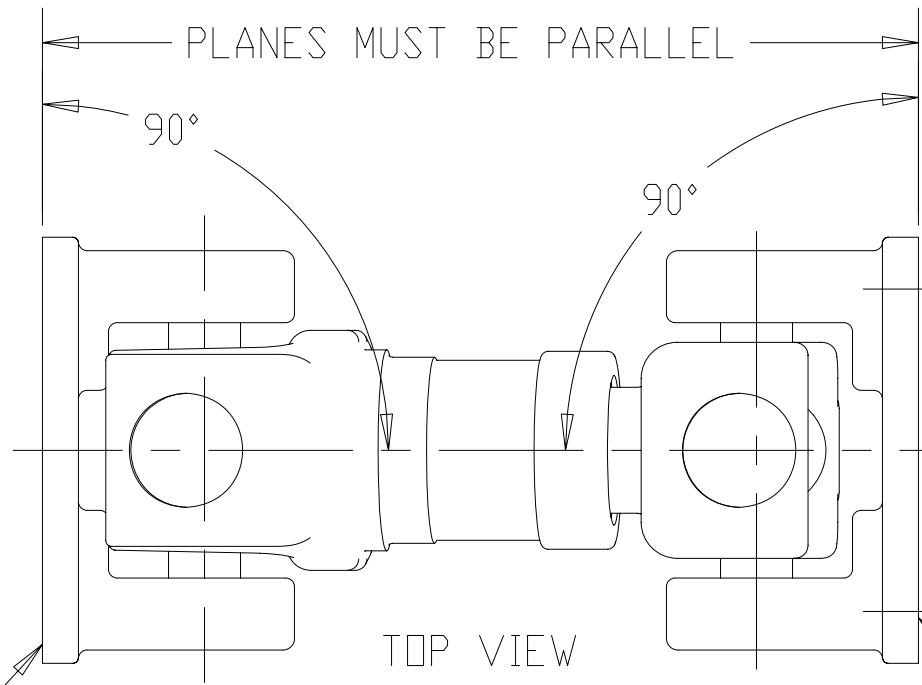


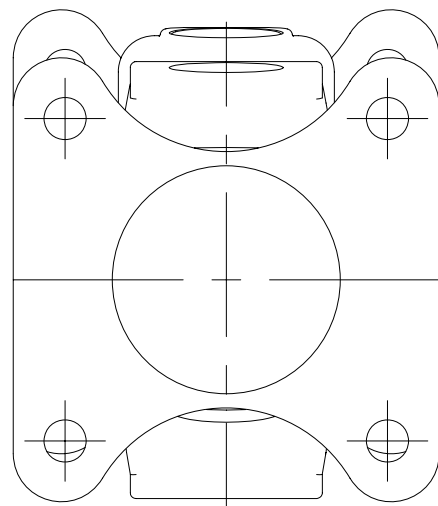
MOUNTING FLANGE



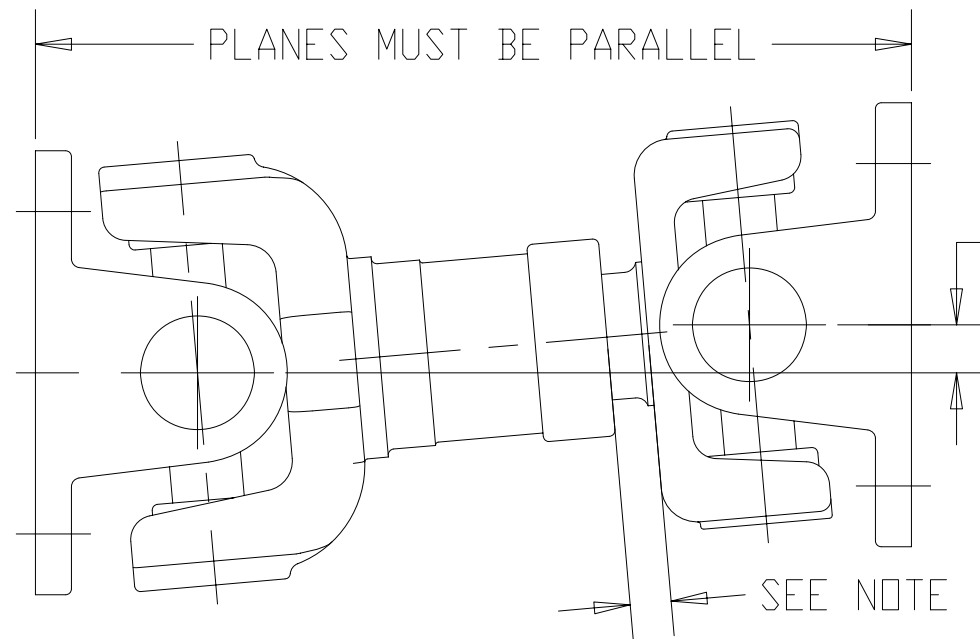
TOP VIEW

PLANES MUST BE PARALLEL  
90°  
90°  
ALIGN BOTH MOUNTING FLANGE CENTERLINES TO BE WITH IN 0.031 (0.8mm)

MOUNTING FLANGE



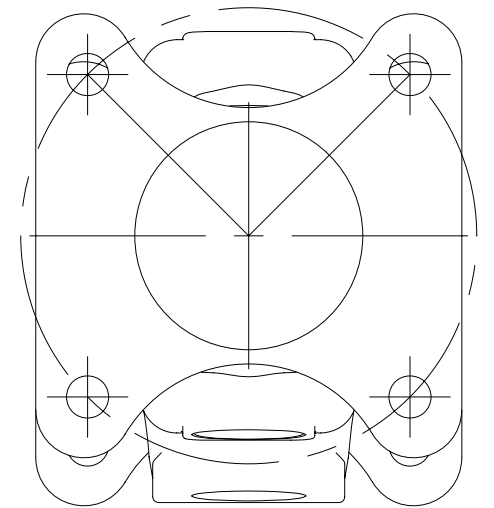
FRONT VIEW



SIDE VIEW

PLANES MUST BE PARALLEL  
0.50 +0/-0.25  
(12.7mm +0/-6.4)

SEE NOTE



**NOTE:**

IMPORTANT: THE SLIP JOINT, REFERENCED IN THE SIDE VIEW, MUST REST IN THE MIDDLE THIRD OF IT'S TRAVEL WHEN INSTALLED.

This document contains confidential and trade secret information, is the property of Cummins NPower, LLC and is given to the receiver in confidence. The receiver, by receiving and retaining of the document accepts the document in confidence and agrees that, except as authorized in writing by Cummins NPower, it will (1) not use the document or any copy thereof or the confidential or trade secret information therein, (2) not copy the document, (3) not disclose to others either the document or the confidential or trade secret information therein, and (4) upon completion of the need to retain the document, or upon demand, return the document, all copies thereof, and all material copied therefrom. COPYRIGHT Cummins NPower, LLC



CUMMINS NPOWER, LLC  
CORPORATE OFFICE  
1600 BUERKLE ROAD  
WHITE BEAR LAKE, MN  
WWW.NPOWER.CUMMINS.COM

NPOWER SYSTEMS  
DESIGN CENTER  
875 LAWRENCE DRIVE  
DEPERE, WISCONSIN

INSTALL LAYOUT, SHORT COPUPLED SHAFT ASM FIREPUMP

UNLESS OTHERWISE SPECIFIED ALL DIMENSION TOLERANCES ARE

ANGULAR DIMENSIONS ± 1°	IMPERIAL UNITS	METRIC UNITS
THIRD ANGLE PROJECTION	MACHINE TOLERANCES XX = ± 0.010 XXX = ± 0.005	MACHINE TOLERANCES X = ± 0.4 XX = ± 0.2
	FORM TOLERANCES XX = ± 0.030 XXX = ± 0.015	FORM TOLERANCES X = ± 0.8 XX = ± 0.4
	FAB TOLERANCES XX = ± 0.050 XXX = ± 0.030	FAB TOLERANCES X = ± 1.5 XX = ± 0.8

DWG UNITS: IN/LB/SEC(MM)	DRAWN BY: JDT	DATE: 12APR07
EST WEIGHT:	APPD BY:	DATE:
SCALE: .500	DO NOT SCALE	SHEET 10F1
	DRAWING NO: 11537	REV:

REV	DESCRIPTION OF REVISION	BY	DATE