

Clamp  
8965

Clamp  
3926703

CAC Heat Exch.  
8966

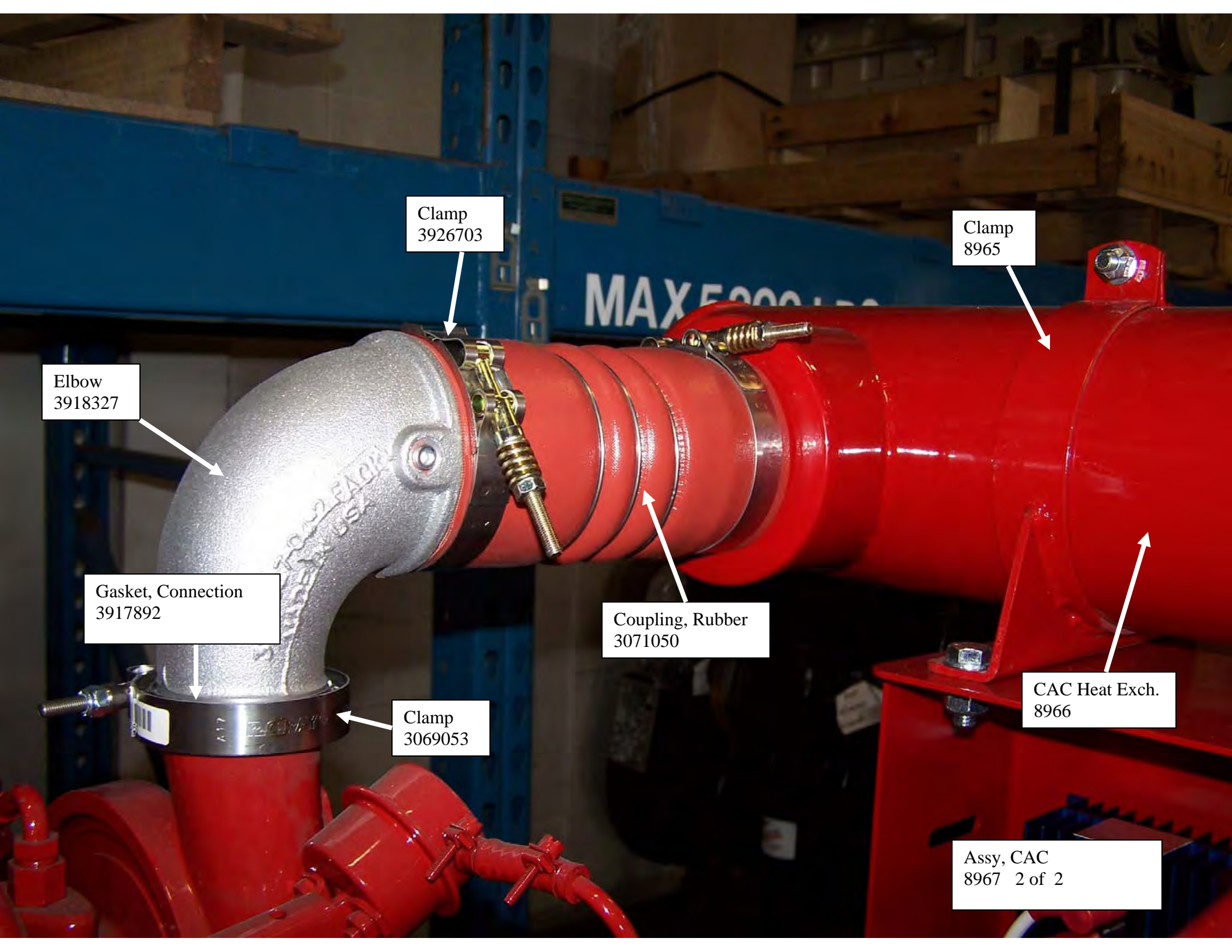
Coupling, Rubber  
3071050

Battery Isolator  
8838

Bracket  
9508

Tube  
8970

Assy, CAC  
8967 1 of 2



Clamp  
3926703

Clamp  
8965

Elbow  
3918327

Gasket, Connection  
3917892

Coupling, Rubber  
3071050

Clamp  
3069053

CAC Heat Exch.  
8966

Assy, CAC  
8967 2 of 2

Reduction Bushing  
LTL-SRB3412

Fitting  
R-269HB-12-8

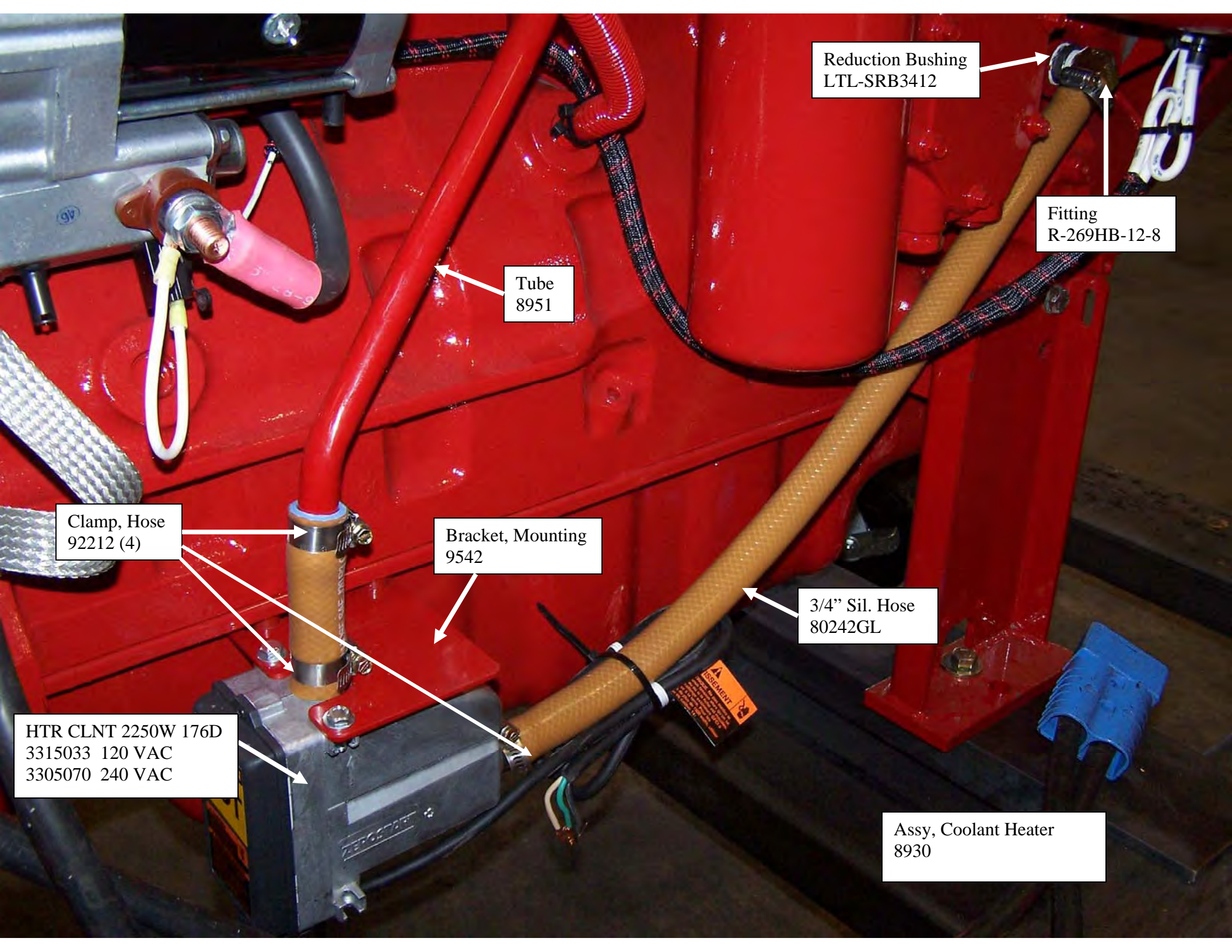
Clamp, Hose  
92212

3/4" Sil. Hose  
80242GL

Drain Valve  
80511

Tube  
8970

Assy, Coolant Heater  
& Assy, Heat Exchanger  
8930 2 of 2 & 8919 2 of 2



Reduction Bushing  
LTL-SRB3412

Fitting  
R-269HB-12-8

Tube  
8951

Clamp, Hose  
92212 (4)

Bracket, Mounting  
9542

3/4" Sil. Hose  
80242GL

HTR CLNT 2250W 176D  
3315033 120 VAC  
3305070 240 VAC

Assy, Coolant Heater  
8930

Elbow  
LTL-E190

Pipe, Blk 46" L  
9535

Nipple 1 x 6  
BNG6

Union  
B150UG

Bracket  
10364

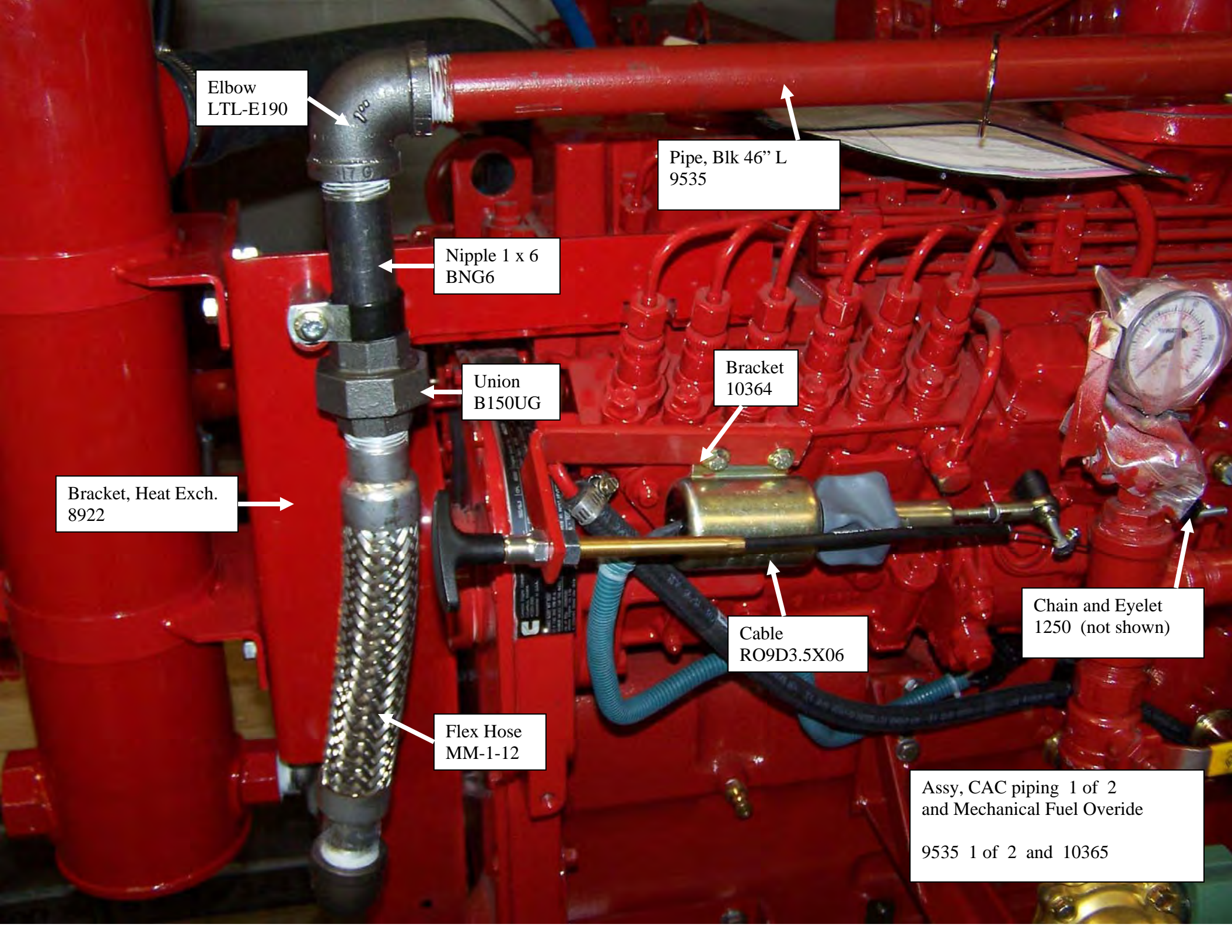
Bracket, Heat Exch.  
8922

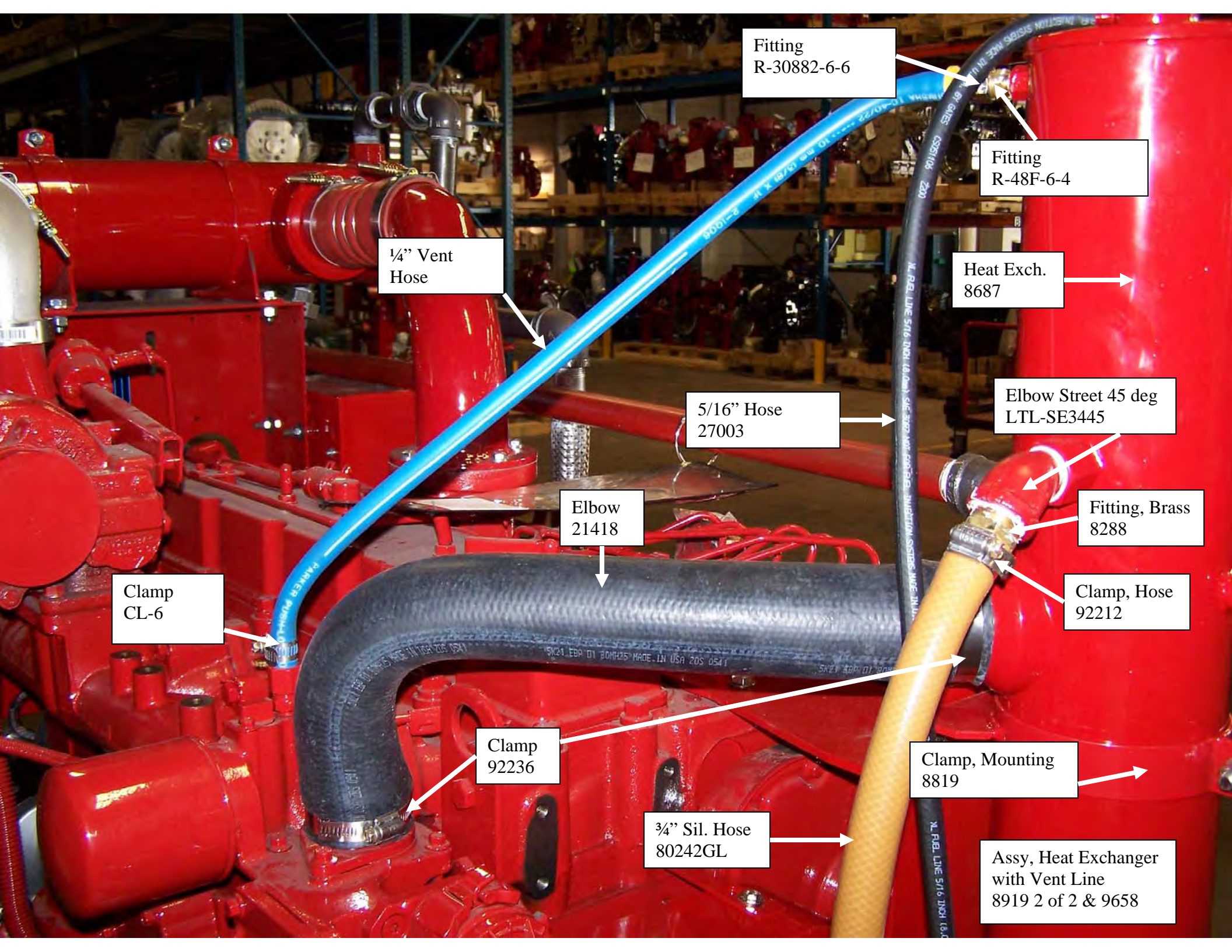
Chain and Eyelet  
1250 (not shown)

Cable  
RO9D3.5X06

Flex Hose  
MM-1-12

Assy, CAC piping 1 of 2  
and Mechanical Fuel Override  
9535 1 of 2 and 10365





Fitting  
R-30882-6-6

Fitting  
R-48F-6-4

1/4" Vent  
Hose

Heat Exch.  
8687

5/16" Hose  
27003

Elbow Street 45 deg  
LTL-SE3445

Elbow  
21418

Fitting, Brass  
8288

Clamp  
CL-6

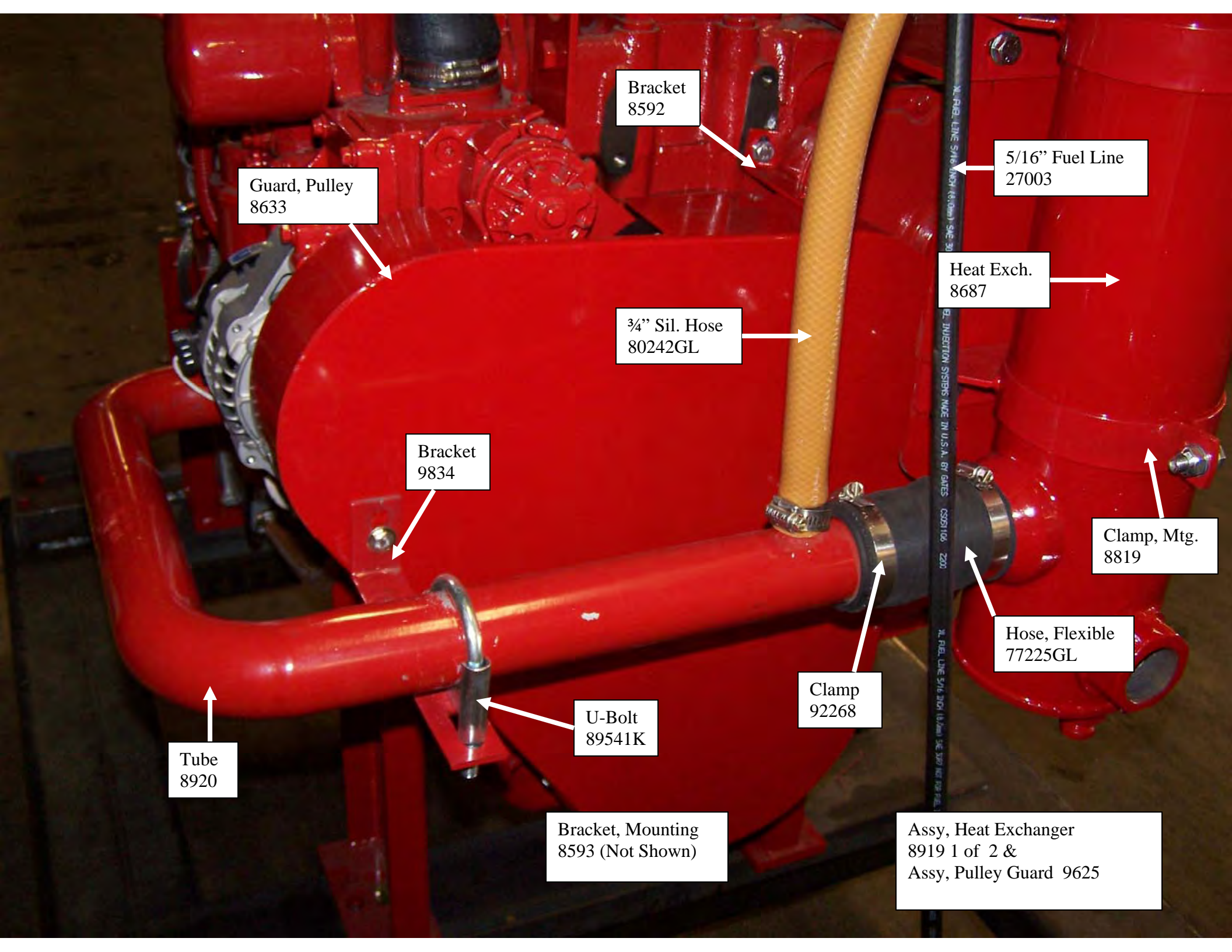
Clamp, Hose  
92212

Clamp  
92236

Clamp, Mounting  
8819

3/4" Sil. Hose  
80242GL

Assy, Heat Exchanger  
with Vent Line  
8919 2 of 2 & 9658



Guard, Pulley  
8633

Bracket  
8592

5/16" Fuel Line  
27003

Heat Exch.  
8687

3/4" Sil. Hose  
80242GL

Bracket  
9834

Clamp, Mtg.  
8819

Tube  
8920

U-Bolt  
89541K

Clamp  
92268

Hose, Flexible  
77225GL

Bracket, Mounting  
8593 (Not Shown)

Assy, Heat Exchanger  
8919 1 of 2 &  
Assy, Pulley Guard 9625

Street Elbow  
LTL-SE190

Union  
B150UG

Nipple 1 x 3-1/2  
BNGN

Street Elbow  
LTL-SE190

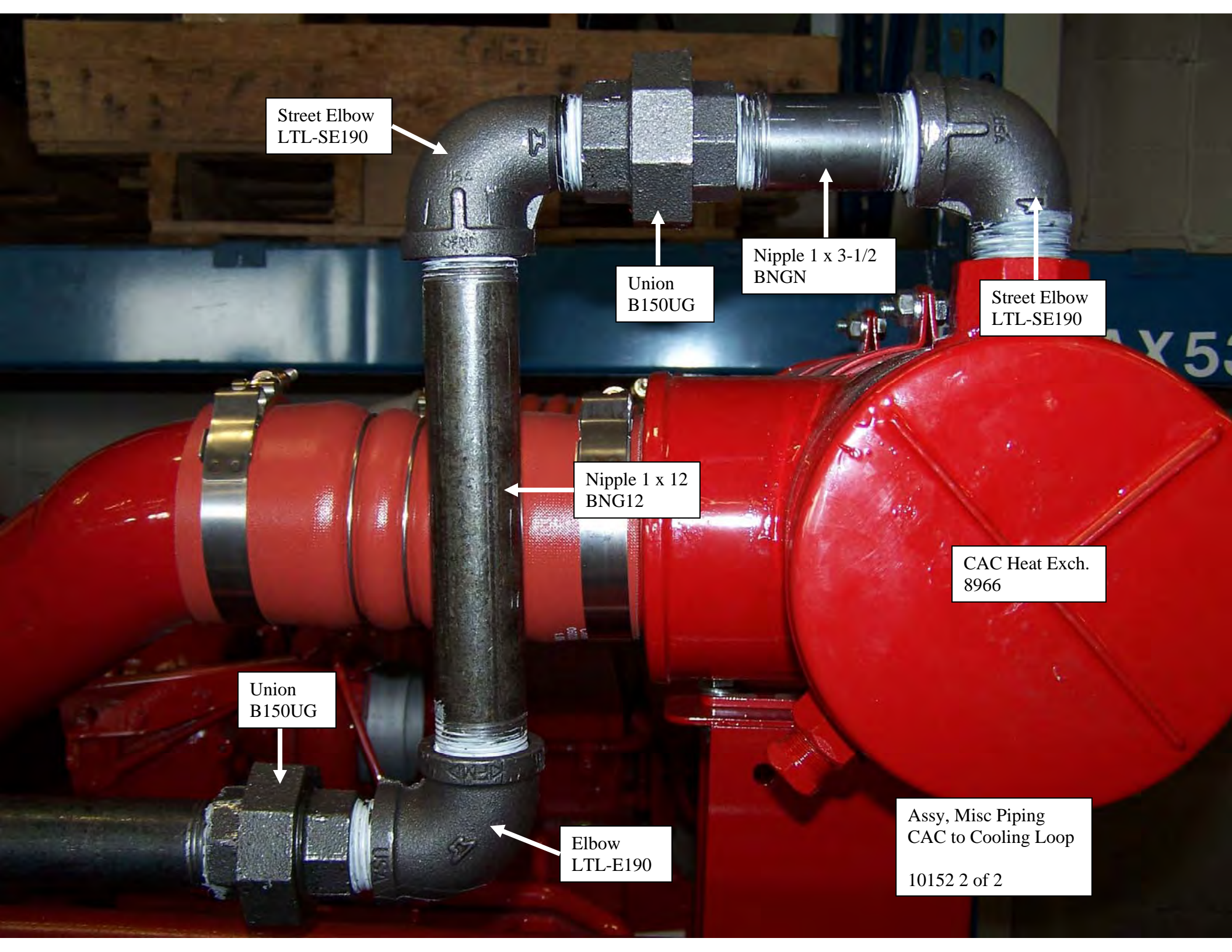
Nipple 1 x 12  
BNG12

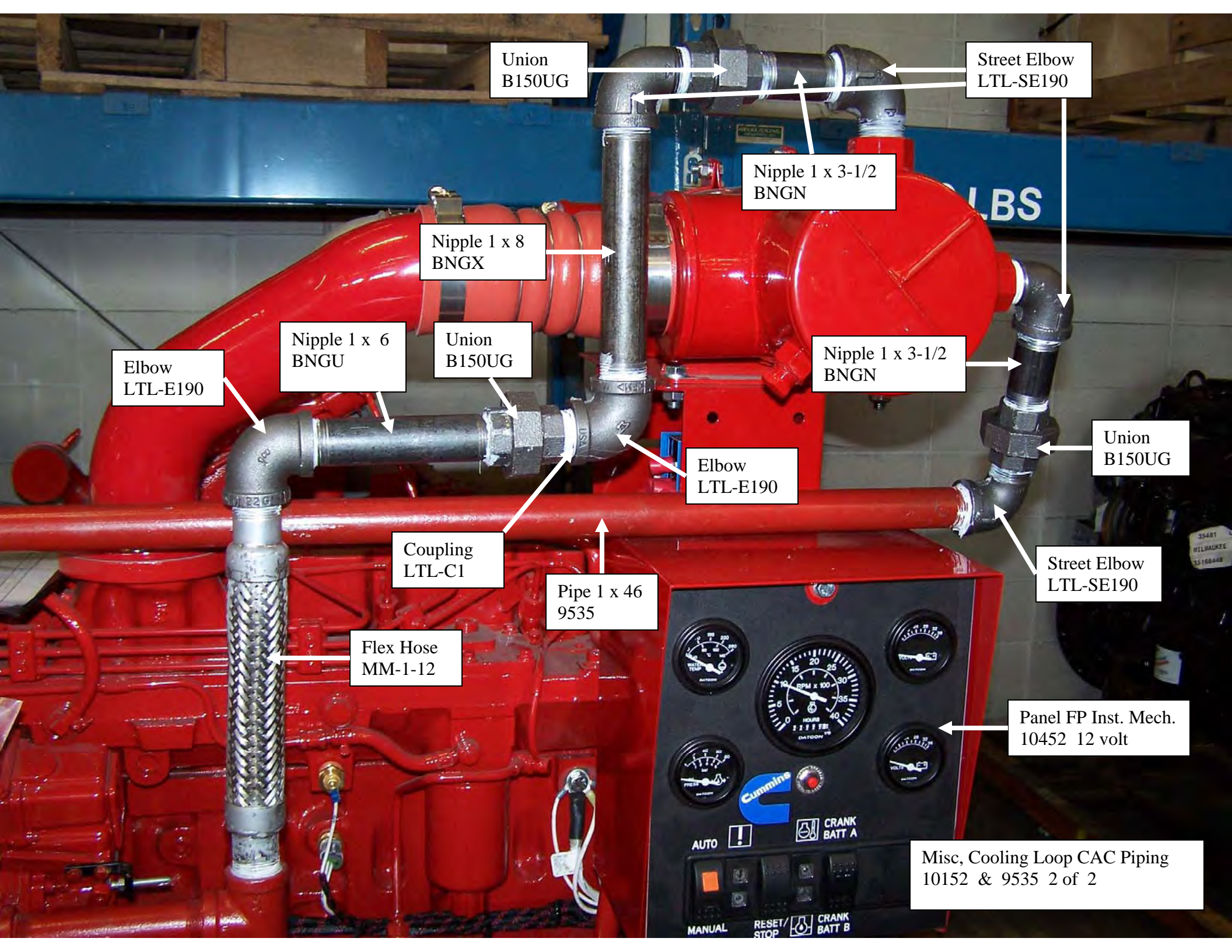
CAC Heat Exch.  
8966

Union  
B150UG

Elbow  
LTL-E190

Assy, Misc Piping  
CAC to Cooling Loop  
10152 2 of 2





Union  
B150UG

Street Elbow  
LTL-SE190

Nipple 1 x 3-1/2  
BNGN

Nipple 1 x 8  
BNGX

Nipple 1 x 6  
BNGU

Union  
B150UG

Nipple 1 x 3-1/2  
BNGN

Elbow  
LTL-E190

Elbow  
LTL-E190

Union  
B150UG

Coupling  
LTL-C1

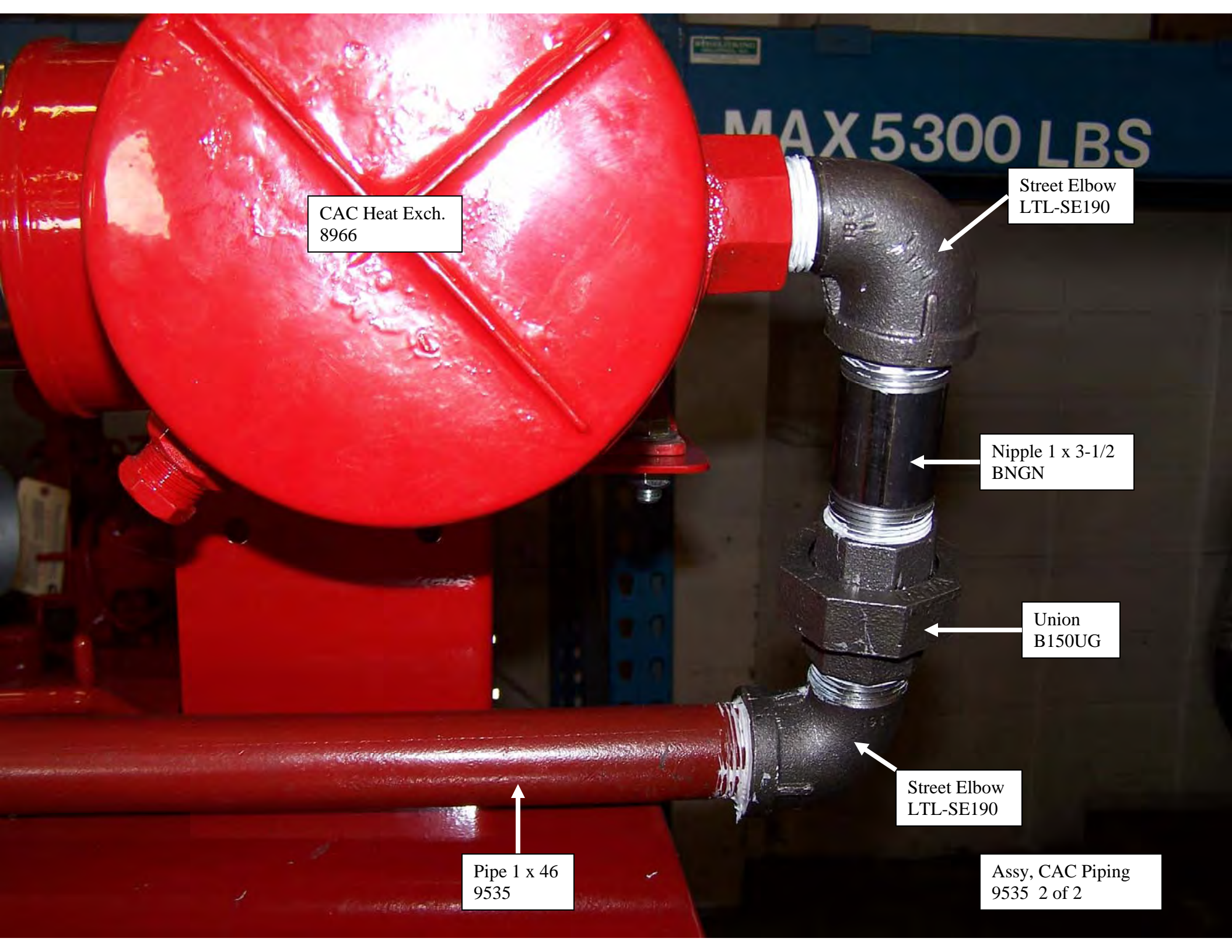
Pipe 1 x 46  
9535

Street Elbow  
LTL-SE190

Flex Hose  
MM-1-12

Panel FP Inst. Mech.  
10452 12 volt

Misc, Cooling Loop CAC Piping  
10152 & 9535 2 of 2



CAC Heat Exch.  
8966

Street Elbow  
LTL-SE190

Nipple 1 x 3-1/2  
BNGN

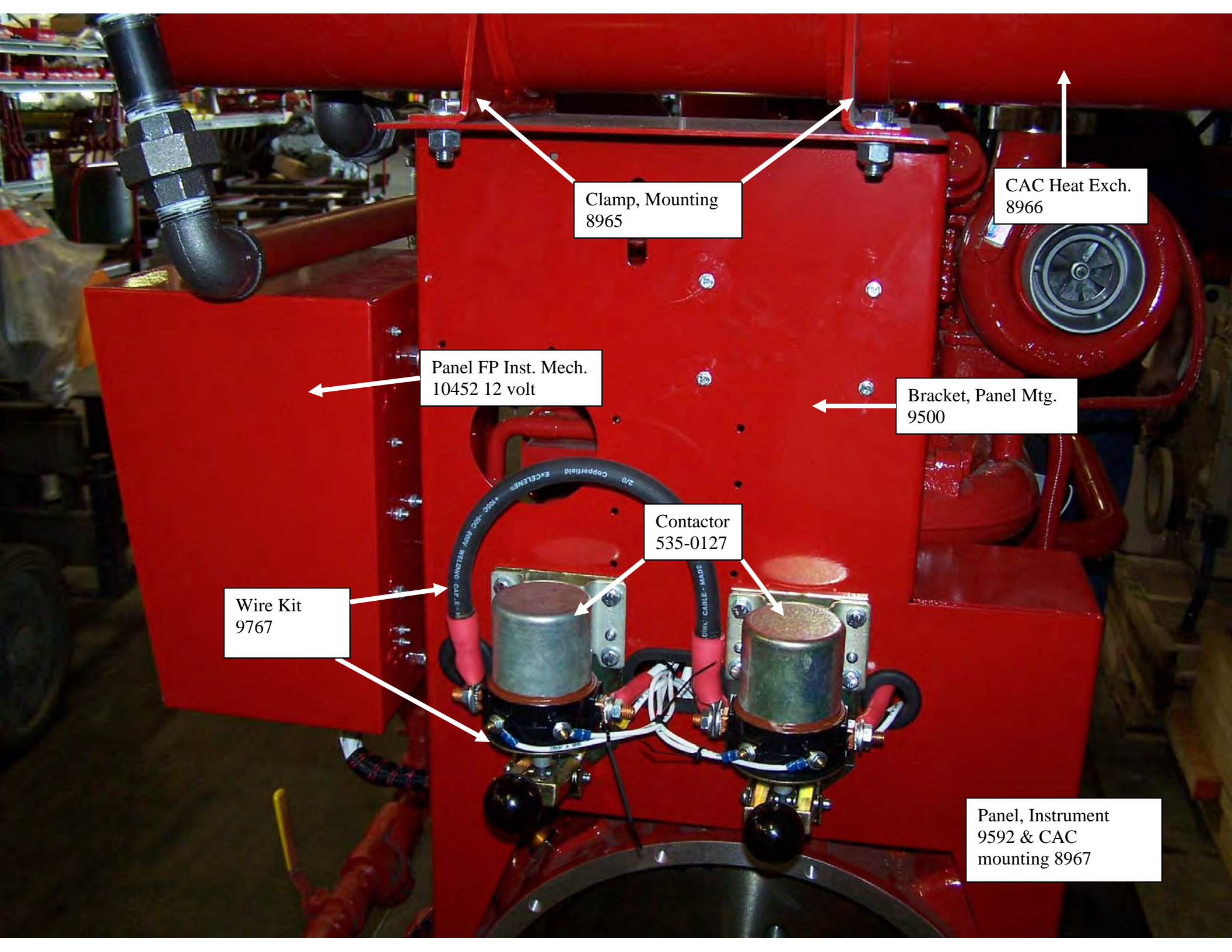
Union  
B150UG

Street Elbow  
LTL-SE190

Pipe 1 x 46  
9535

Assy, CAC Piping  
9535 2 of 2

MAX 5300 LBS



Clamp, Mounting  
8965

CAC Heat Exch.  
8966

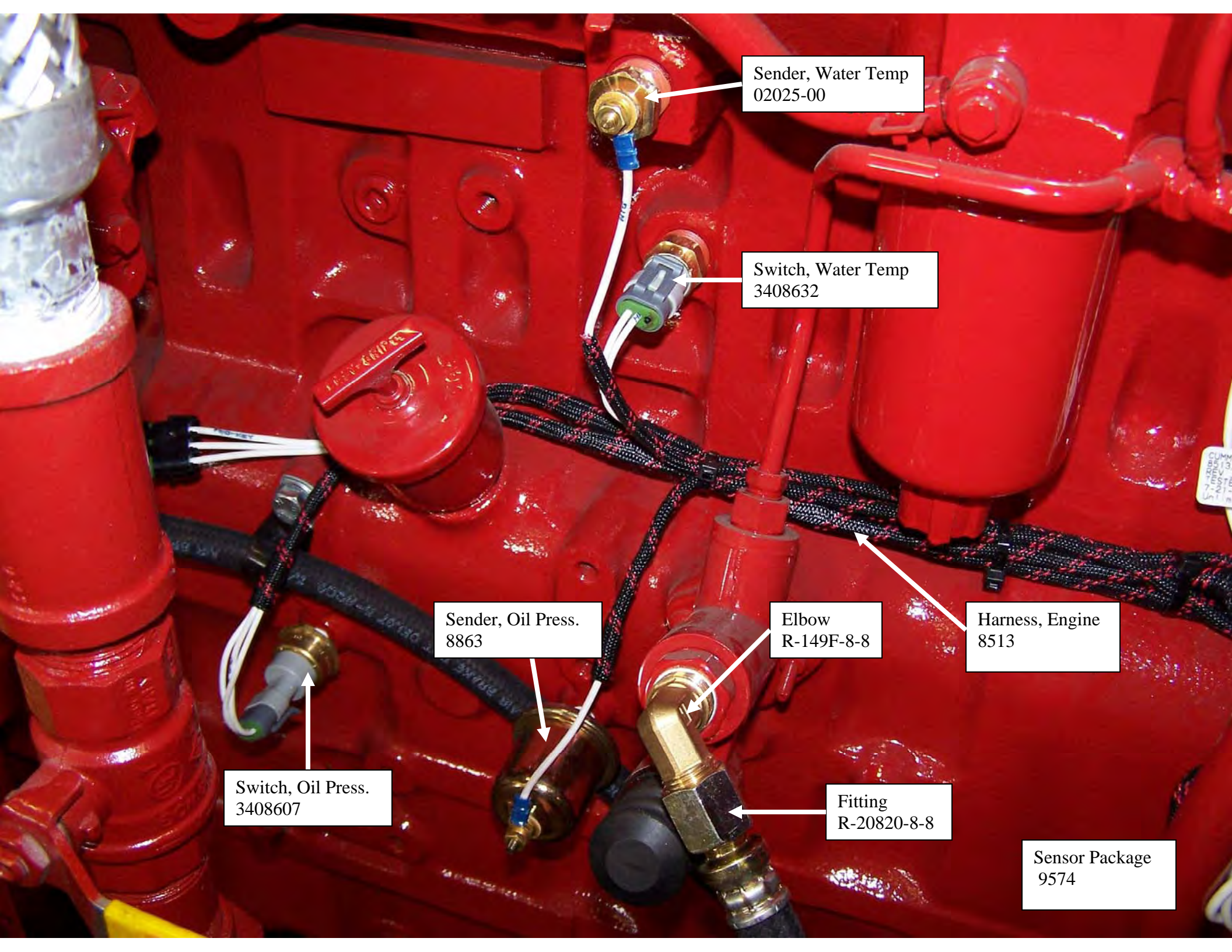
Panel FP Inst. Mech.  
10452 12 volt

Bracket, Panel Mtg.  
9500

Contactor  
535-0127

Wire Kit  
9767

Panel, Instrument  
9592 & CAC  
mounting 8967



Sender, Water Temp  
02025-00

Switch, Water Temp  
3408632

Sender, Oil Press.  
8863

Switch, Oil Press.  
3408607

Elbow  
R-149F-8-8

Fitting  
R-20820-8-8

Harness, Engine  
8513

Sensor Package  
9574

Hose, Fuel Line  
201-6

Hose, Fuel Line  
201-8

Elbow  
23920-6-6

Bulkhead  
6-WGTX-WLNS

Elbow  
23920-8-8

Bulkhead  
8-WGTX-WLNS

Fuel Line Hose Kit  
9575