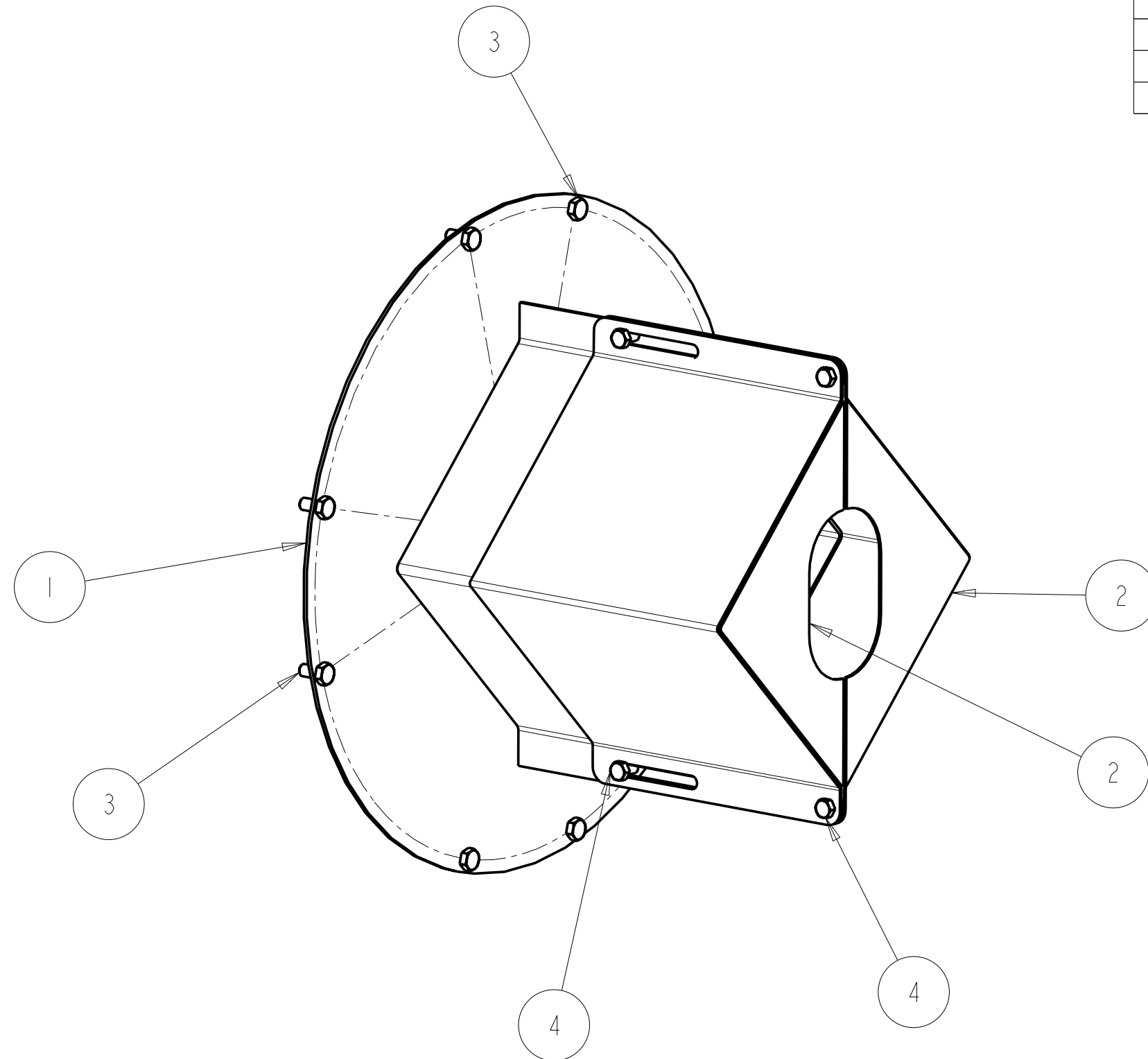


**BILL OF MATERIAL**

| ITEM | QTY | DESCRIPTION                               | PART NUMBER |
|------|-----|---|-------------|
| 1    | 1   | WELDMENT, SHAFT GUARD, SAE #1, FIREPUMP   | 9498        |
| 2    | 2   | COVER, TELESCOPING, SHAFT GUARD, FIREPUMP | 9493        |
| 3    | 8   | SCREW, CAP, HEX HEAD, M10 x 20            | HHCS_M10_20 |
| 4    | 4   | SCREW, CAP, HEX HEAD, M8 x 20             | HHCS_M8_20  |



ALL RIGHTS TO MANUFACTURE, COPY OR DISPOSE OF THIS DRAWING OR ITS CONTENTS ARE RESERVED UNLESS OTHERWISE SPECIFIED IN WRITING BY CUMMINS NPOWER, LLC



CUMMINS NPOWER, LLC  
CORPORATE OFFICE  
1600 BUERKLE ROAD  
WHITE BEAR LAKE, MN  
WWW.NPOWER.CUMMINS.COM

CUMMINS FIREPOWER  
DESIGN CENTER  
875 LAWRENCE DRIVE  
DEPERE, WISCONSIN  
CUMMINSFIREPOWER.COM

UNLESS OTHERWISE SPECIFIED  
ALL DIMENSION TOLERANCES ARE  
ANGULAR DIMENSIONS ± 1°

TITLE 1: ASSEMBLY, TELESCOPING SHAFT GUARD, SAE #1  
TITLE 2: FIREPUMP

| IMPERIAL UNITS   | METRIC UNITS  |
|--|---|
| MACHINE TOLERANCES<br>.X = ± 0.06<br>.XX = ± 0.010<br>.XXX = ± 0.001 | MACHINE TOLERANCES<br>X = ± 1.5<br>XX = ± 0.5<br>XXX = ± 0.05 |
| WELD TOLERANCES<br>.X = ± 0.25<br>.XX = ± 0.12<br>.XXX = ± 0.06      | WELDED TOLERANCES<br>X = ± 5<br>XX = ± 3<br>XXX = ± 1.50      |

DWG UNITS:  
IN/LB/S

DRAWN BY: DAVE N  
APPD BY: -

DATE: 14APR2005  
DATE: -

EST WEIGHT:  
42238.628

SCALE: 0.250  
DO NOT SCALE

SHEET 10FI

DRAWING NO: 9497  
REV: A

| REV | DESCRIPTION OF REVISION | REV BY | DATE     |
|-----|-------------------------|--------|----------|
| A   | REV PER TITLE BLOCK     | DAVE N | 21 JUN05 |