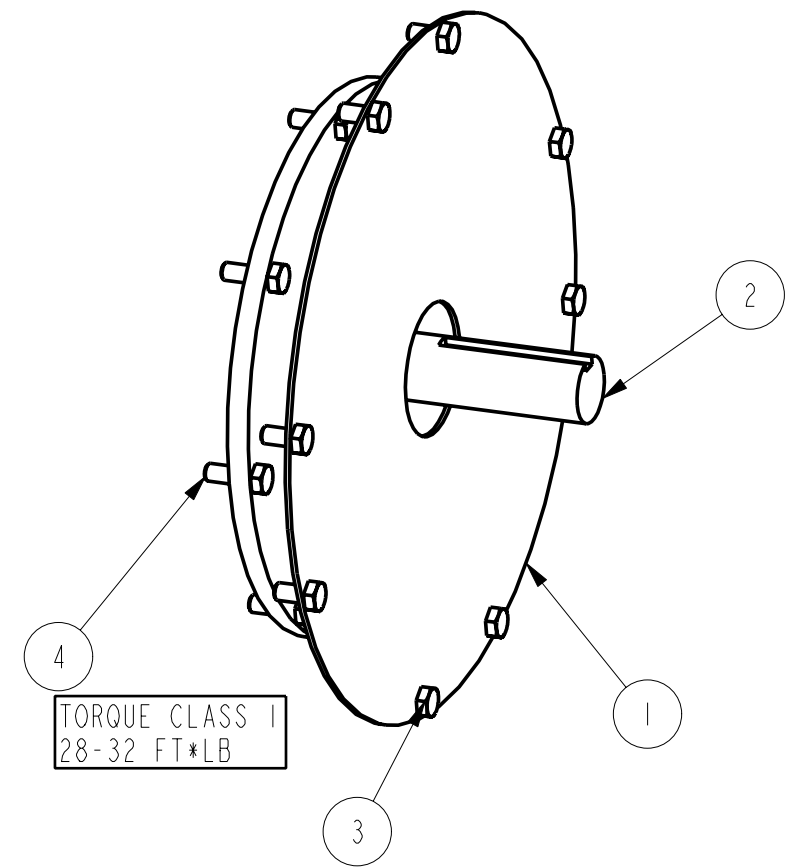
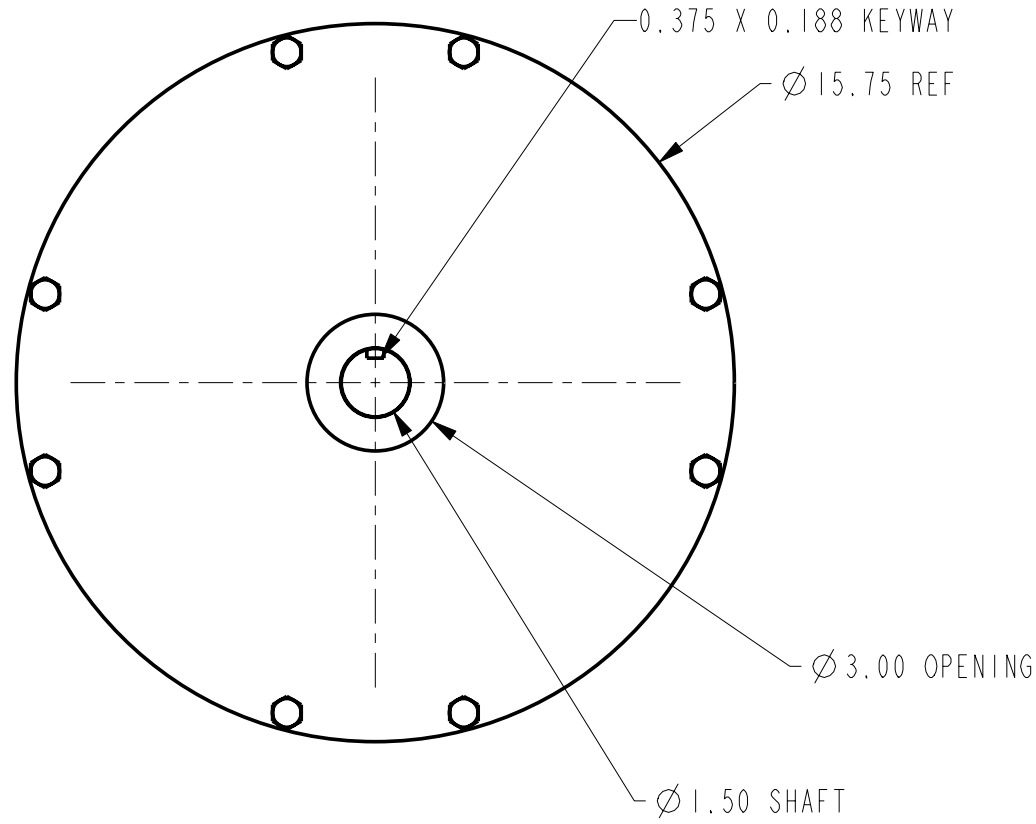
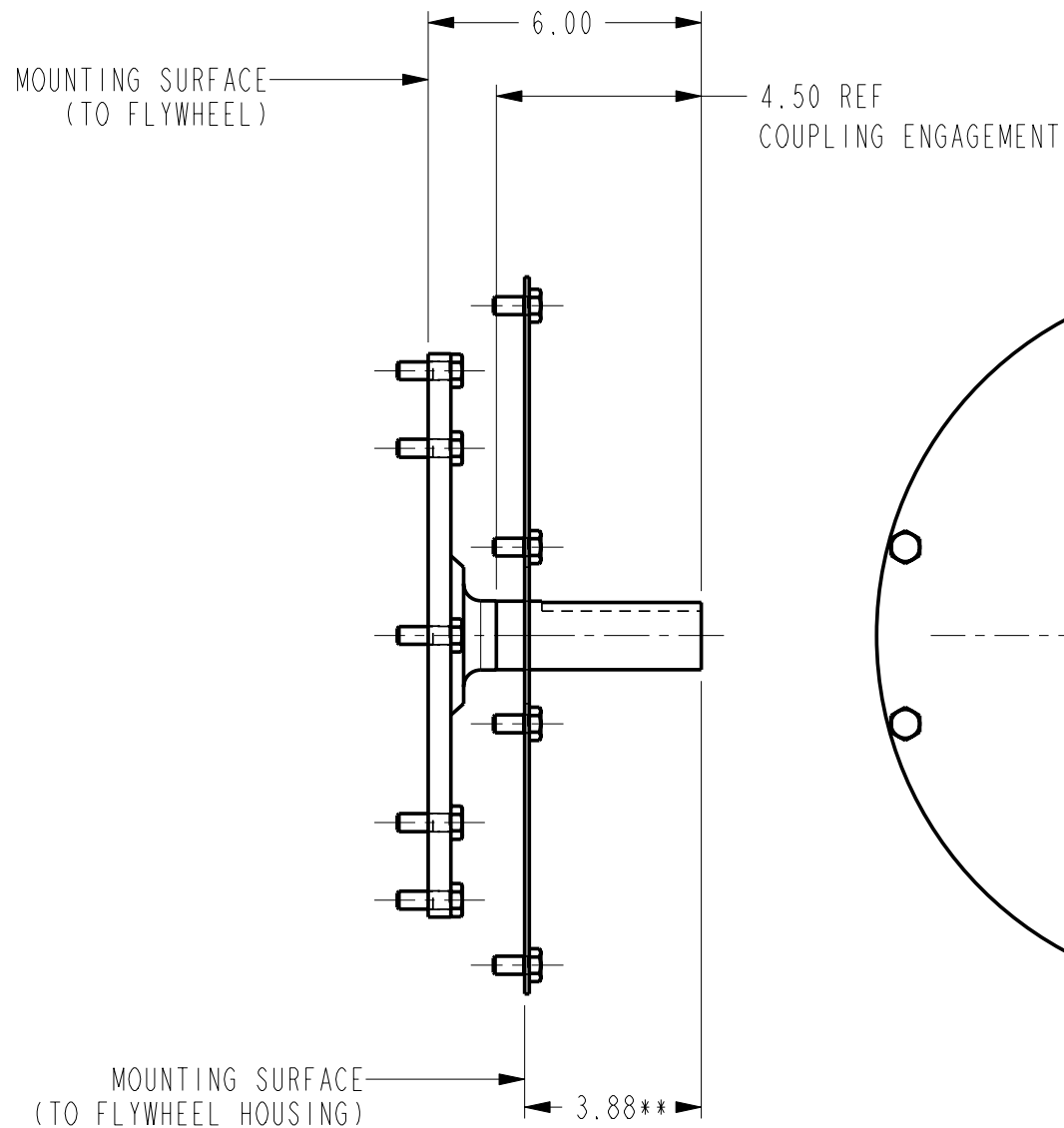


BILL OF MATERIAL			
ITEM	QTY	DESCRIPTION	PART NUMBER
1	1	PLATE, STUB SHAFT GUARD, SAE #4, FIREPUMP	9551
2	1	STUB SHAFT, 1.50" DIA. HAYES #126976, FIREPUMP	9675
3	8	SCREW, CAP, HEX HEAD, M10 x 20	HHCS_M10_20
4	8	SCREW, CAP, HEX HEAD, M10 x 30	HHCS_M10_30



\*\*NOTE: FOR CFP-F25 & F35 SUBTRACT 1.13"

ALL RIGHTS TO MANUFACTURE, COPY OR DISPOSE OF THIS DRAWING OR ITS CONTENTS ARE RESERVED UNLESS OTHERWISE SPECIFIED IN WRITING BY CUMMINS NPOWER, LLC

**Cummins Fire Power**

CUMMINS NPOWER, LLC  
CORPORATE OFFICE  
1600 BUERKLE ROAD  
WHITE BEAR LAKE, MN  
WWW.NPOWER.CUMMINS.COM

CUMMINS FIREPOWER  
DESIGN CENTER  
875 LAWRENCE DRIVE  
DEPERE, WISCONSIN  
CUMMINSFIREPOWER.COM

UNLESS OTHERWISE SPECIFIED ALL DIMENSION TOLERANCES ARE ANGULAR DIMENSIONS ± 1°

TITLE 1: ASSEMBLY, STUB SHAFT, 1.50" DIA.  
TITLE 2: FIREPUMP, CFP33

IMPERIAL UNITS	METRIC UNITS	DWG UNITS: IN/LB/S	DRAWN BY: DAVE N	DATE: 01JUN2005
MACHINE TOLERANCES .X = ± 0.06 .XX = ± 0.010 .XXX = ± 0.001	MACHINE TOLERANCES X = ± 1.5 XX = ± 0.5 XXX = ± 0.05	EST WEIGHT: 42238.628	APPD BY: -	DATE: -
WELD TOLERANCES X = ± 0.25 .XX = ± 0.12 .XXX = ± 0.06	WELDED TOLERANCES X = ± 5 XX = ± 3 XXX = ± 1.50	SCALE: 0.250	DO NOT SCALE	SHEET 10FI
REV	DESCRIPTION OF REVISION	REV BY	DATE	DRAWING NO: 9676
A1	CORRECTED TORQUE	DAVE N	20JUN05	REV: A
A	CREATED DRAWING	DAVE N	01JUN05	